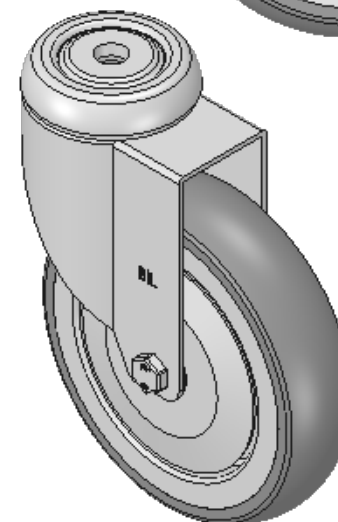
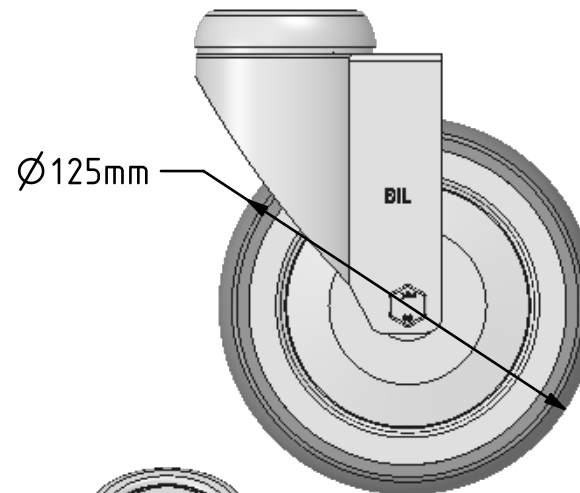
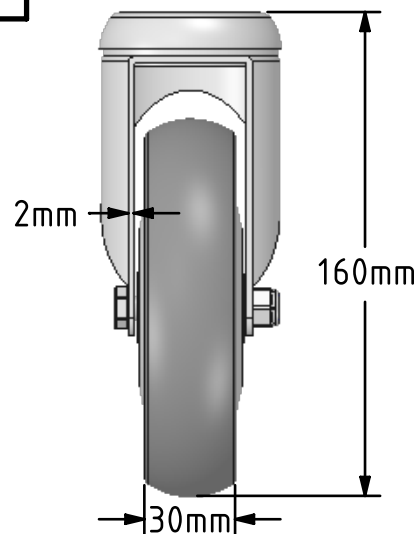
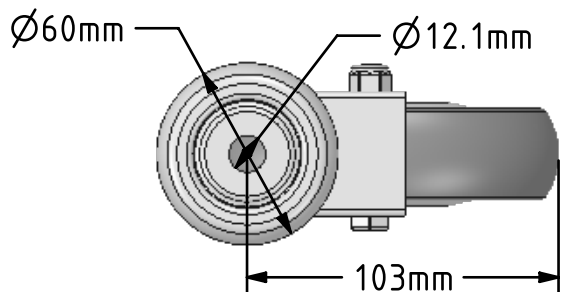


DRAWING DISCLAIMER
 COPYRIGHT OF THIS DRAWING IS RESERVED BY BIL GROUP LTD. IT IS ISSUED ON CONDITION THAT IT IS NOT REPRODUCED, COPIED, OR DISCLOSED TO A THIRD PARTY EITHER WHOLLY OR IN PART WITHOUT THE CONSENT IN WRITING OF BIL GROUP LTD.



Description:
 BZC125TPRBJBH12

Pressed steel swivel castor with a 12mm bolt hole fitted with a grey thermoplastic rubber tyred polypropylene centred wheel with a ball bearing. Wheel diameter 125mm, tread width 30mm, overall height 160mm. Load capacity 90kg.



	NAME	DATE
DRAWN	Matt	25/06/18
APPROVED BY	Chris	25/06/18
SCALE	2.5	25/06/18
WEIGHT	0.677kg	25/06/18

 BIL Group Ltd, Porte Marsh Road, Calne
 Wiltshire, SN11 9BW, United Kingdom
 Tel +44 (0)1249 822 222 Fax: +44 (0)1249 822 300
 www.bilgroup.co.uk

TITLE
BZC125TPRBJBH12

UNLESS OTHERWISE SPECIFIED DIMENSIONS ARE IN MILLIMETRES
 Unspecified Tolerances
 Machining ± 0.25mm
 Fabrication ± 1mm

SIZE	DWG NO.	REV
A4	BILCW03BZC125TPRBJBH12_01	1

FILE NAME BILCW03BZC125TPRBJBH12_01.PDF SHEET 1 OF 1