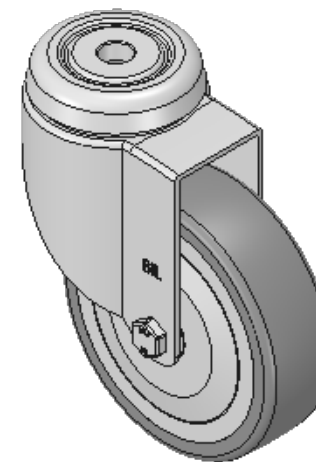
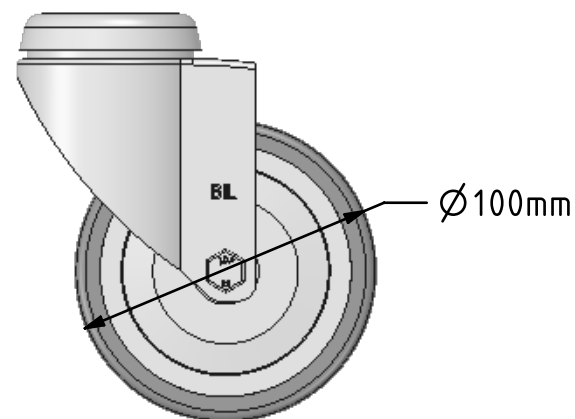
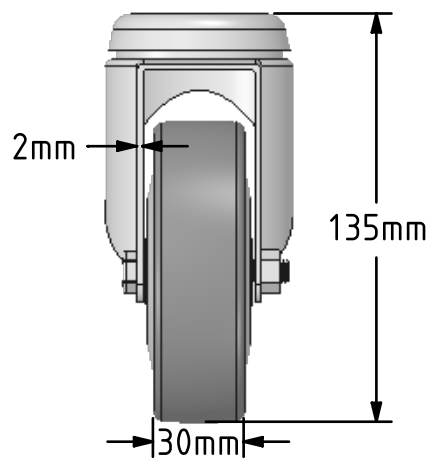
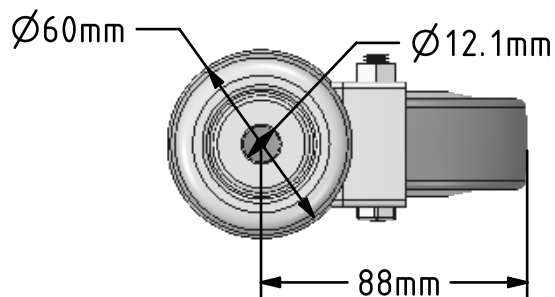



DRAWING DISCLAIMER
 COPYRIGHT OF THIS DRAWING IS RESERVED BY BIL GROUP LTD. IT IS ISSUED ON CONDITION THAT IT IS NOT REPRODUCED, COPIED, OR DISCLOSED TO A THIRD PARTY EITHER WHOLLY OR IN PART WITHOUT THE CONSENT IN WRITING OF BIL GROUP LTD.



Description:
 BZC100TPRBJBH12

Pressed steel swivel castor with a 12mm bolt hole fixing fitted with a grey thermoplastic tyred polypropylene centred wheel with ball bearing. Wheel diameter 100mm, Tread width 30mm, Overall height 135mm, Load capacity 80kg



| | | | |
|---------------------------------------------------------------------------------------------------------------------------------------------------------|---------------------------|----------|-----------------------------------------------------------------------------------------------------------------------------------------------------------------------------------------------------------------------------------------------|
| | NAME | DATE |  BIL Group Ltd, Porte Marsh Road, Calne Wiltshire, SN11 9BW, United Kingdom Tel +44 (0)1249 822 222 Fax: +44 (0)1249 822 300 www.bilgroup.co.uk |
| DRAWN | Matt | 08/01/18 | |
| APPROVED BY | Chris | 08/01/18 | |
| SCALE | 2.5 | 08/01/18 | |
| WEIGHT | 0.586kg | 08/01/18 | |
| UNLESS OTHERWISE SPECIFIED DIMENSIONS ARE IN MILLIMETRES Unspecified Tolerances Machining $\pm 0.25\text{mm}$ Fabrication $\pm 1\text{mm}$ | | | TITLE BZC100TPRBJBH12 |
| SIZE | DWG NO. | | REV |
| A4 | BILCW03BZC100TPRBJBH12_01 | | 1 |
| FILE NAME | | | BILCW03BZC100TPRBJBH12_01.PDF SHEET 1 OF 1 |