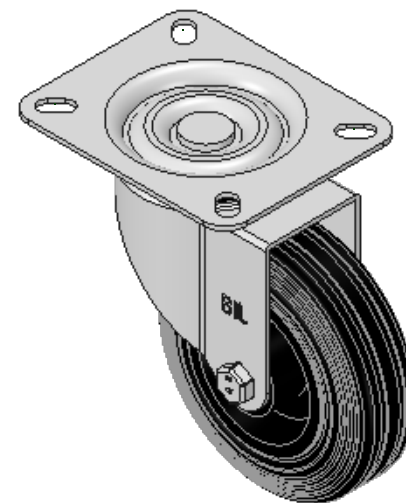
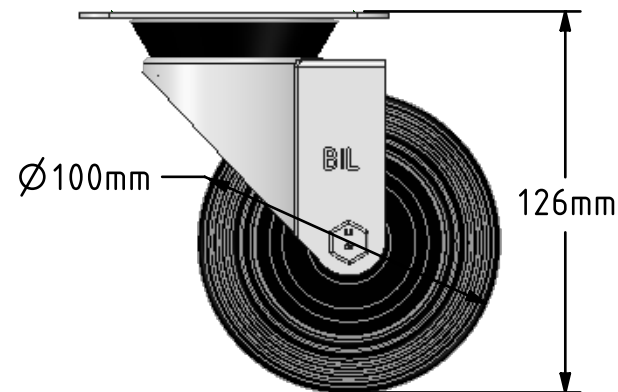
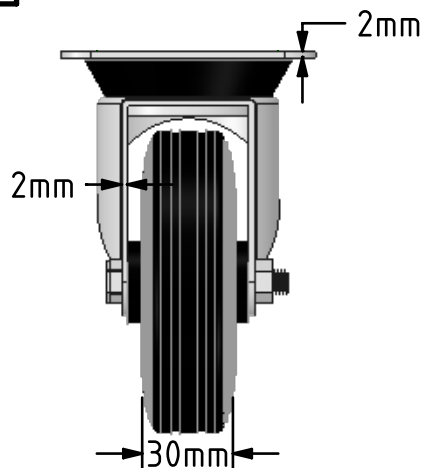
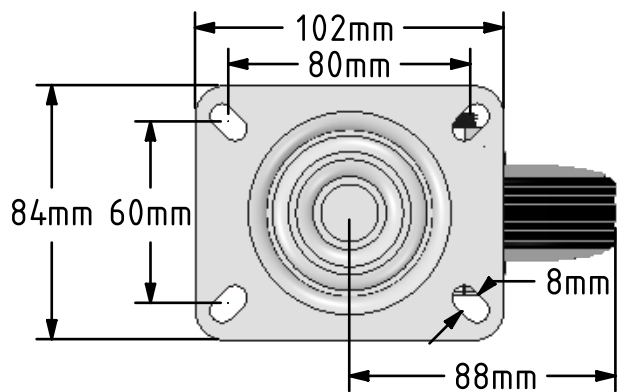



DRAWING DISCLAIMER  
 COPYRIGHT OF THIS DRAWING IS RESERVED BY BIL GROUP LTD. IT IS ISSUED ON CONDITION THAT IT IS NOT REPRODUCED, COPIED, OR DISCLOSED TO A THIRD PARTY EITHER WHOLLY OR IN PART WITHOUT THE CONSENT IN WRITING OF BIL GROUP LTD.



Description:  
 BZBC100PS

Pressed steel swivel castor with top plate fixing fitted with a black rubber tyre on black polypropylene centred wheel with a plain bearing. Wheel diameter 100mm, tread width 30mm, overall height 126mm, plate size 102mm x 84mm, hole centres 80mm x 60mm. Load capacity 70kg.



	NAME	DATE	 BIL Group Ltd, Porte Marsh Road, Calne Wiltshire, SN11 9BW, United Kingdom Tel +44 (0)1249 822 222 Fax: +44 (0)1249 822 300 www.bilgroup.co.uk
DRAWN	Matt	09/01/18	
APPROVED BY	Tim W	09/01/18	
SCALE	2:5	09/01/18	
WEIGHT	0.692kg	09/01/18	TITLE
UNLESS OTHERWISE SPECIFIED DIMENSIONS ARE IN MILLIMETRES  Unspecified Tolerances Machining ± 0.25mm Fabrication ± 1mm			BZBC100PS
SIZE	DWG NO.	REV	
A4	BILCW03BZBC100PS__01	1	
FILE NAME	BILCW03BZBC100PS__01.PDF		SHEET 1 OF 1