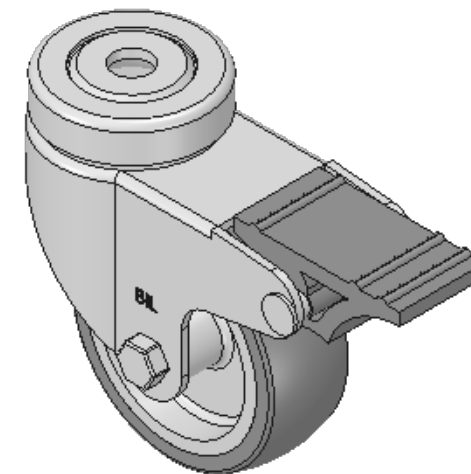
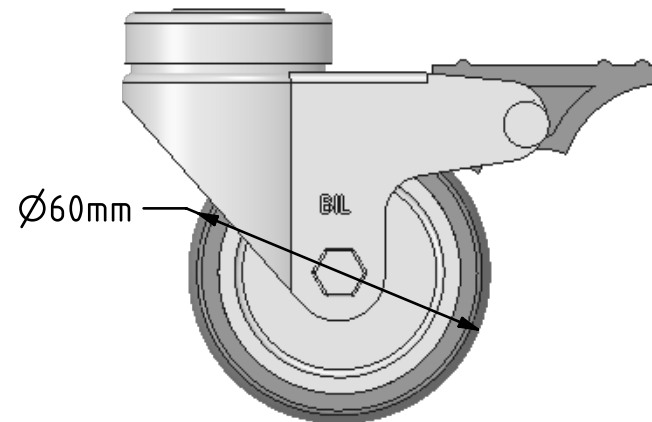
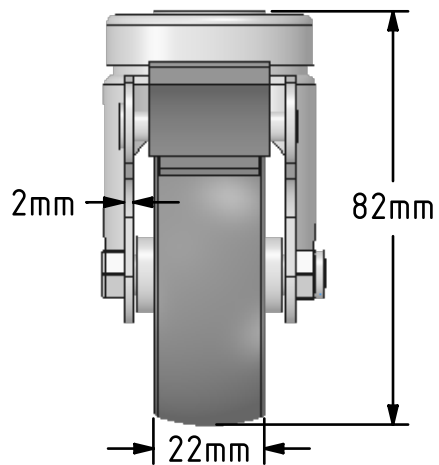
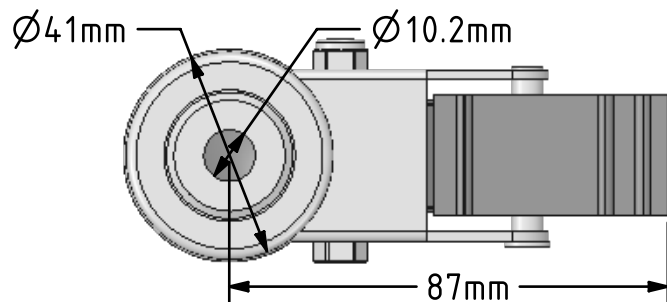
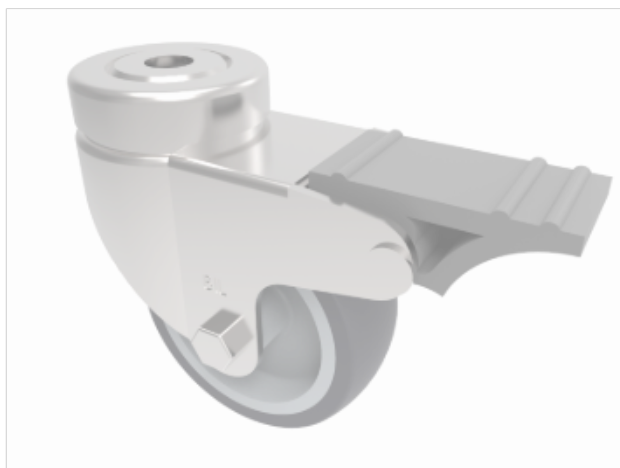


DRAWING DISCLAIMER  
 COPYRIGHT OF THIS DRAWING IS RESERVED BY BIL GROUP LTD. IT IS ISSUED ON CONDITION THAT IT IS NOT REPRODUCED, COPIED, OR DISCLOSED TO A THIRD PARTY EITHER WHOLLY OR IN PART WITHOUT THE CONSENT IN WRITING OF BIL GROUP LTD.



Description:  
 BZA60VGRBH10SWB

Pressed steel swivel castor with a 10mm bolt hole fixing fitted with a grey thermoplastic rubber tyred wheel with a plain bearing and a totallock brake. Wheel diameter 60mm, overall height 82mm. Load capacity 50kg.



	NAME	DATE
DRAWN	Matt	31/01/18
APPROVED BY	Tim W	31/01/18
SCALE	2:3	31/01/18
WEIGHT	0.247kg	31/01/18

 BIL Group Ltd, Porte Marsh Road, Calne  
 Wiltshire, SN11 9BW, United Kingdom  
 Tel +44 (0)1249 822 222 Fax: +44 (0)1249 822 300  
 www.bilgroup.co.uk

TITLE  
**BZA60VGRBH10SWB**

UNLESS OTHERWISE SPECIFIED DIMENSIONS ARE IN MILLIMETRES		SIZE A4	DWG NO. BILCW03BZA60VGRBH10SWB_01	REV 1
Unspecified Tolerances Machining ± 0.25mm Fabrication ± 1mm		FILE NAME BILCW03BZA60VGRBH10SWB_01.PDF SHEET 1 OF 1		