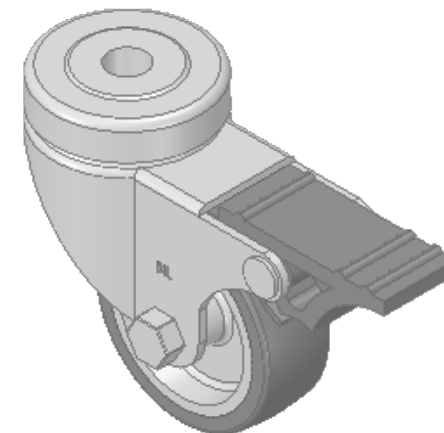
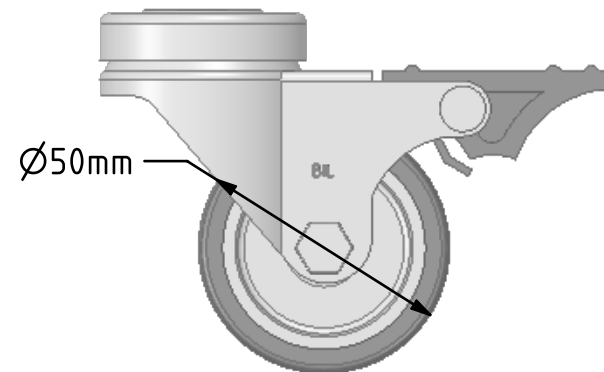
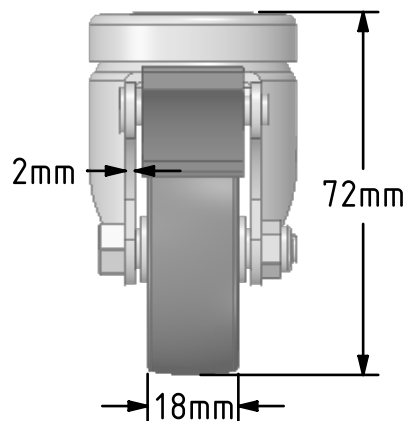
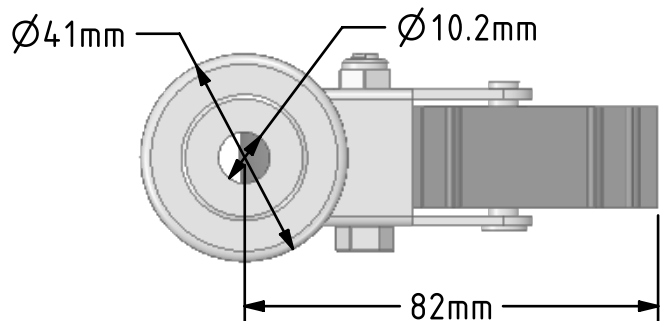



DRAWING DISCLAIMER
 COPYRIGHT OF THIS DRAWING IS RESERVED BY BIL GROUP LTD. IT IS ISSUED ON CONDITION THAT IT IS NOT REPRODUCED, COPIED, OR DISCLOSED TO A THIRD PARTY EITHER WHOLLY OR IN PART WITHOUT THE CONSENT IN WRITING OF BIL GROUP LTD.



Description:
 BZA50VGRBH10SWB

Pressed steel swivel castor with 10mm bolt hole fitted with a grey thermoplastic rubber tyre on grey polypropylene centre wheel with plain bearing and total lock brake. Wheel diameter 50mm, tread width 18mm, overall height 72mm, Load capacity 40kg.



| | NAME | DATE | BIL Group Ltd, Porte Marsh Road, Calne Wiltshire, SN11 9BW, United Kingdom Tel +44 (0)1249 822 222 Fax: +44 (0)1249 822 300 www.bilgroup.co.uk | |
|---|---------|----------|--|--|
| DRAWN | Matt | 23/10/18 |  TITLE BZA50VGRBH10SWB | |
| APPROVED BY | Tim W | 23/10/18 | | |
| SCALE | 2:3 | 23/10/18 | | |
| WEIGHT | 0.191kg | 23/10/18 | | |
| UNLESS OTHERWISE SPECIFIED DIMENSIONS ARE IN MILLIMETRES | | | SIZE | DWG NO. |
| Unspecified Tolerances Machining $\pm 0.25\text{mm}$ Fabrication $\pm 1\text{mm}$ | | | A4 | BILCW03BZA50VGRBH10SWB_01 |
| | | | REV | 1 |
| | | | FILE NAME | BILCW03BZA50VGRBH10SWB_01.PDF SHEET 1 OF 1 |