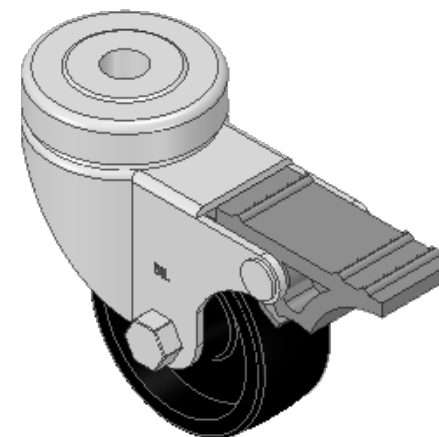
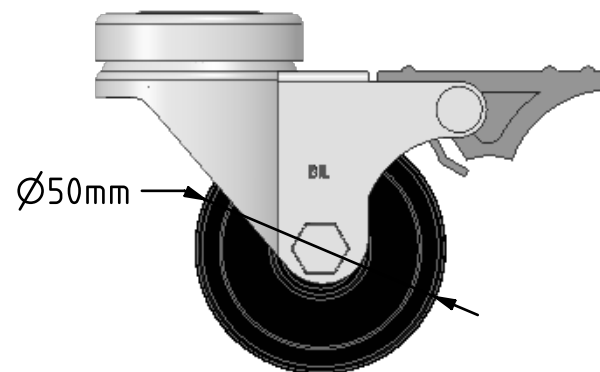
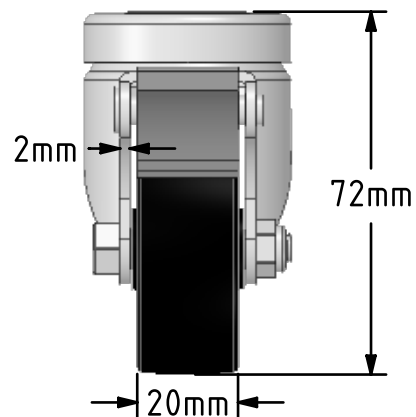
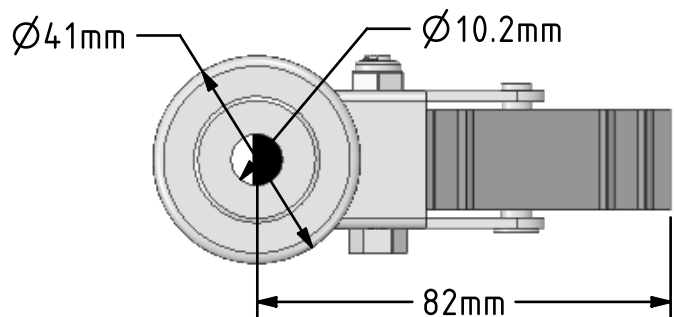
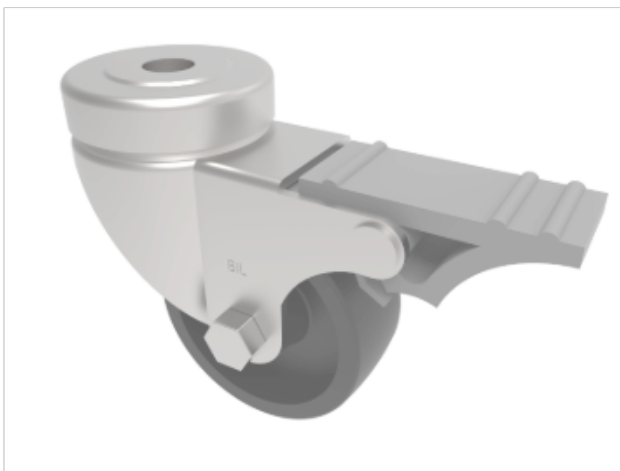



DRAWING DISCLAIMER
 COPYRIGHT OF THIS DRAWING IS RESERVED BY BIL GROUP LTD. IT IS ISSUED ON CONDITION THAT IT IS NOT REPRODUCED, COPIED, OR DISCLOSED TO A THIRD PARTY EITHER WHOLLY OR IN PART WITHOUT THE CONSENT IN WRITING OF BIL GROUP LTD.



Description:
 BZA50PLBH10SWB

Pressed steel swivel castor with 10mm bolt hole fixing fitted with a black polypropylene wheel plain bearing and total lock brake. Wheel diameter 50mm, tread width 20mm, overall height 72mm. Load capacity 50kg.



	NAME	DATE	 BIL Group Ltd, Porte Marsh Road, Calne Wiltshire, SN11 9BW, United Kingdom Tel +44 (0)1249 822 222 Fax: +44 (0)1249 822 300 www.bilgroup.co.uk
DRAWN	Matt	28/03/19	
APPROVED BY	Chris	28/03/19	
SCALE	2:3	28/03/19	
WEIGHT	0.193kg	28/03/19	TITLE
UNLESS OTHERWISE SPECIFIED DIMENSIONS ARE IN MILLIMETRES Unspecified Tolerances Machining ± 0.25mm Fabrication ± 1mm			BZA50PLBH10
SIZE		DWG NO.	REV
A4		BILCW03BZA50PLBH10__01	1
FILE NAME			SHEET 1 OF 1
BILCW03BZA50PLBH10__01.PDF			