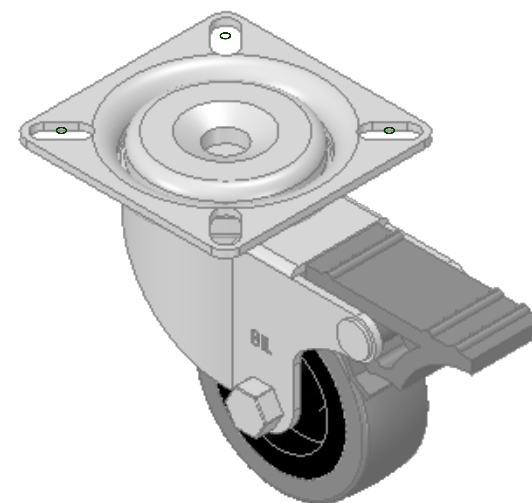
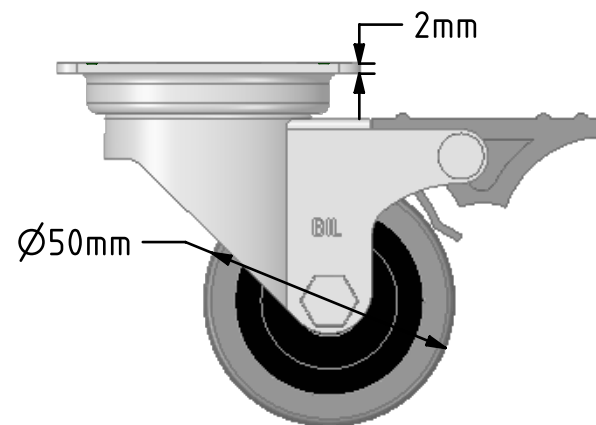
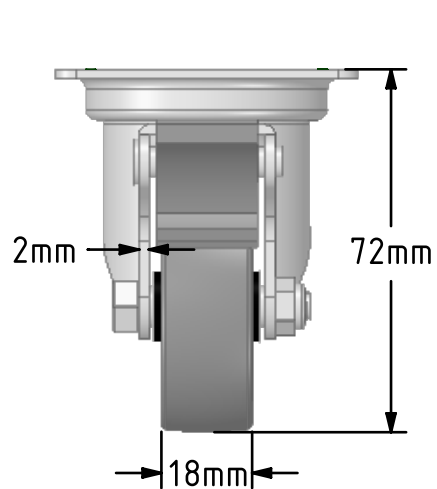
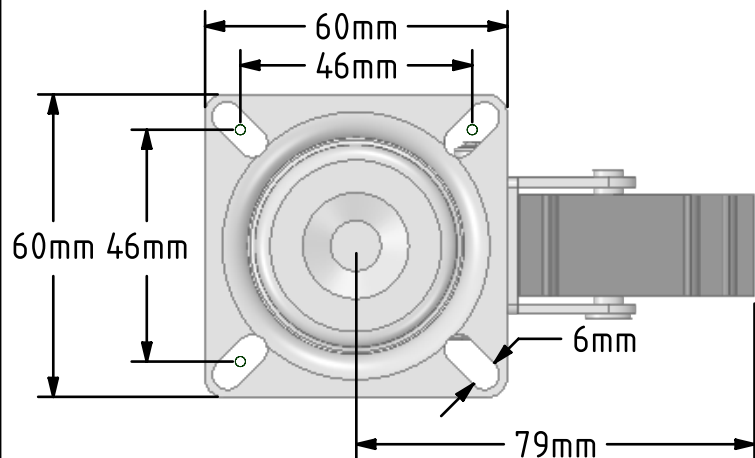


DRAWING DISCLAIMER
 COPYRIGHT OF THIS DRAWING IS RESERVED BY BIL GROUP LTD. IT IS ISSUED ON CONDITION THAT IT IS NOT REPRODUCED, COPIED, OR DISCLOSED TO A THIRD PARTY EITHER WHOLLY OR IN PART WITHOUT THE CONSENT IN WRITING OF BIL GROUP LTD.



Description:
 BZA50GRSWBLP

Pressed steel swivel castor with top plate fixing fitted with a grey rubber tyre on black polypropylene centre wheel with plain bearing and total lock brake. Wheel diameter 50mm, tread width 18mm, overall height 72mm, plate size 60mm x 60mm, hole centres 46mm x 46mm. Load capacity 40kg.



	NAME	DATE
DRAWN	Matt	28/08/18
APPROVED BY	Tim W	28/08/18
SCALE	2:3	28/08/18
WEIGHT	0.263kg	28/08/18

UNLESS OTHERWISE SPECIFIED DIMENSIONS ARE IN MILLIMETRES

Unspecified Tolerances
 Machining ± 0.25mm
 Fabrication ± 1mm



BIL Group Ltd, Porte Marsh Road, Calne
 Wiltshire, SN11 9BW, United Kingdom
 Tel +44 (0)1249 822 222 Fax: +44 (0)1249 822 300
 www.bilgroup.co.uk

TITLE

BZA50GRSWBLP

SIZE DWG NO.

A4

BILCW03BZA50GRSWBLP__01

REV

1

FILE NAME BILCW03BZA50GRSWBLP__01.PDF

SHEET 1 OF 1