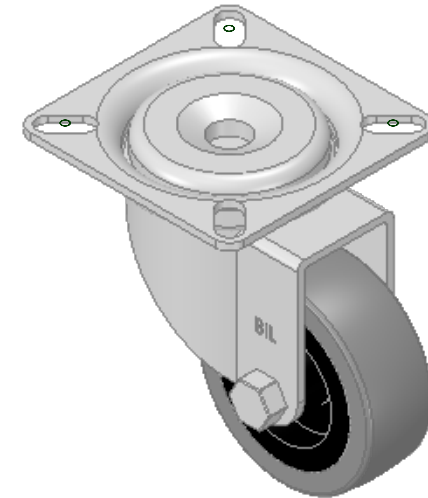
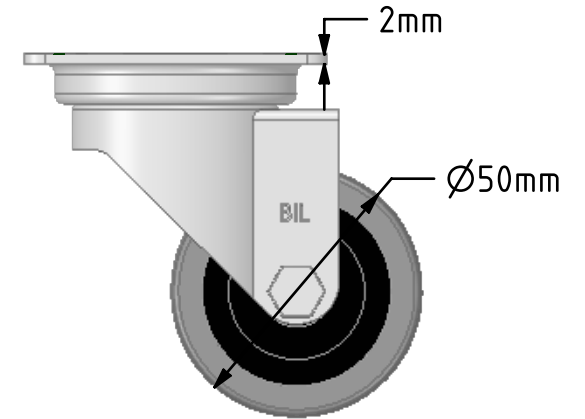
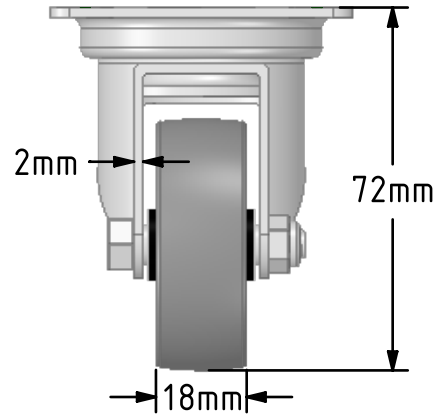
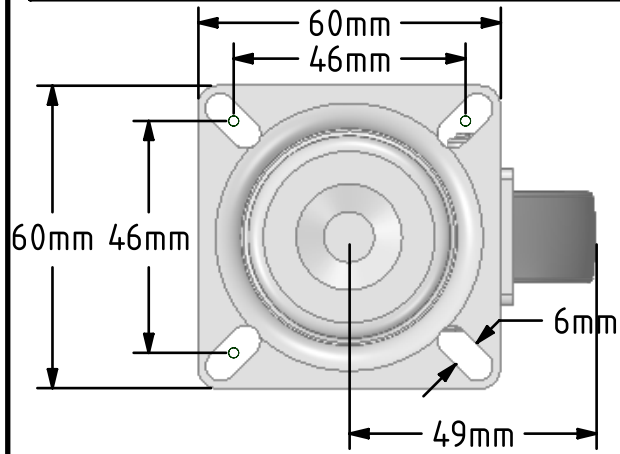



DRAWING DISCLAIMER  
 COPYRIGHT OF THIS DRAWING IS RESERVED BY BIL GROUP LTD. IT IS ISSUED ON CONDITION THAT IT IS NOT REPRODUCED, COPIED, OR DISCLOSED TO A THIRD PARTY EITHER WHOLLY OR IN PART WITHOUT THE CONSENT IN WRITING OF BIL GROUP LTD.



Description:  
 BZA50GRLP

Pressed steel swivel castor with top plate fixing fitted with a grey rubber tyre on black polypropylene centre wheel with plain bearing. Wheel diameter 50mm, tread width 18mm, overall height 72mm, plate size 60mm x 60mm, hole centres 46mm x 46. Load capacity 40kg.



	NAME	DATE	 BIL Group Ltd, Porte Marsh Road, Calne Wiltshire, SN11 9BW, United Kingdom Tel +44 (0)1249 822 222 Fax: +44 (0)1249 822 300 www.bilgroup.co.uk	
DRAWN	Matt	28/08/18	TITLE	
APPROVED BY	Tim W	28/08/18	BZA50GRLP	
SCALE	2:3	28/08/18	SIZE	DWG NO.
WEIGHT	0.224kg	28/08/18	A4	BILCW03BZA50GRLP_01
UNLESS OTHERWISE SPECIFIED DIMENSIONS ARE IN MILLIMETRES			REV	1
Unspecified Tolerances Machining ± 0.25mm Fabrication ± 1mm			FILE NAME	BILCW03BZA50GRLP_01.PDF SHEET 1 OF 1