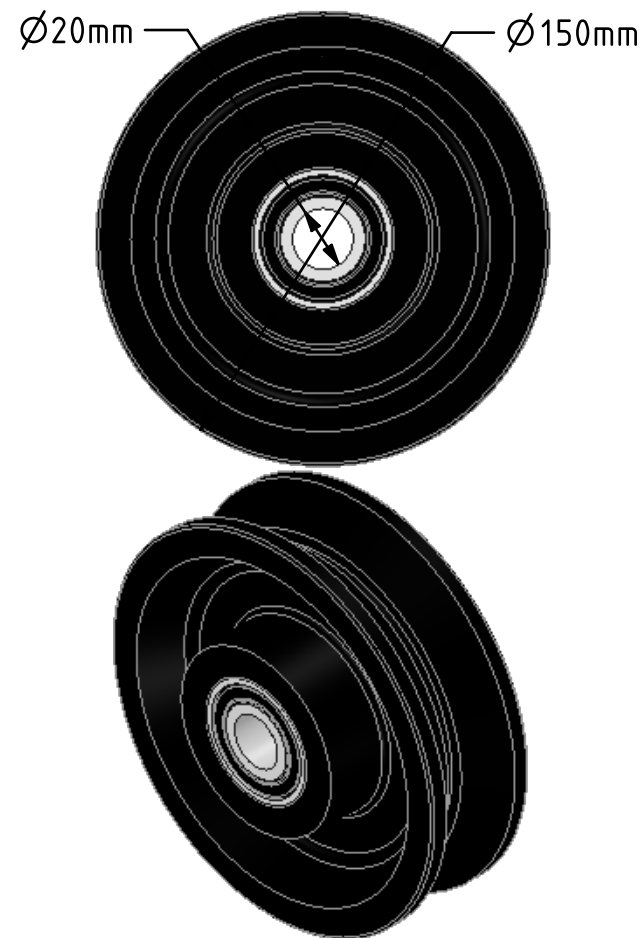
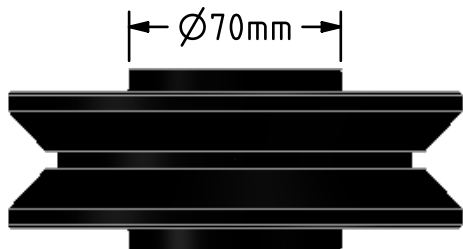


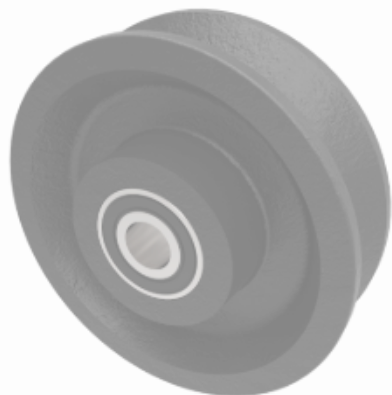
DRAWING DISCLAIMER


COPYRIGHT OF THIS DRAWING IS RESERVED BY BIL GROUP LTD. IT IS ISSUED ON CONDITION THAT IT IS NOT REPRODUCED, COPIED, OR DISCLOSED TO A THIRD PARTY EITHER WHOLLY OR IN PART WITHOUT THE CONSENT IN WRITING OF BIL GROUP LTD.

**Description:**

BZ150WCVBJM20

V-Grooved cast iron wheel with ball bearings. Wheel diameter 150mm, tread width 45mm, bore size 20mm. width of groove 32mm, depth of groove 15mm, hub 60mm. Load capacity 700kg.



	NAME	DATE	 BIL Group Ltd, Porte Marsh Road, Calne Wiltshire, SN11 9BW, United Kingdom Tel +44 (0)1249 822 222 Fax: +44 (0)1249 822 300 www.bilgroup.co.uk		
DRAWN	Matt	07/11/17			
APPROVED BY	Tim W	07/11/17			
SCALE	2:5	07/11/17			
WEIGHT	3.242kg	07/11/17			
UNLESS OTHERWISE SPECIFIED DIMENSIONS ARE IN MILLIMETRES			TITLE		
Unspecified Tolerances Machining $\pm 0.25\text{mm}$ Fabrication $\pm 1\text{mm}$			BZ150WCVBJM20		
			SIZE A4	DWG NO. BILCW01BZ150WCVBJM20__02	REV 2
			FILE NAME BILCW01BZ150WCVBJM20__02.PDF SHEET 1 OF 1		