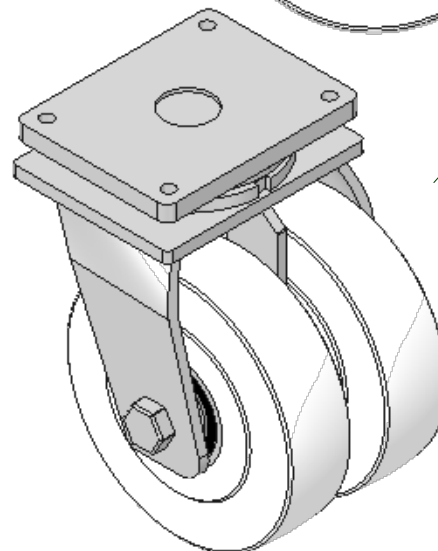
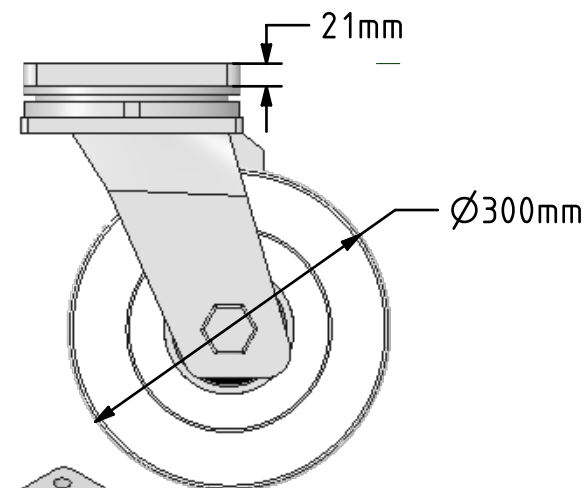
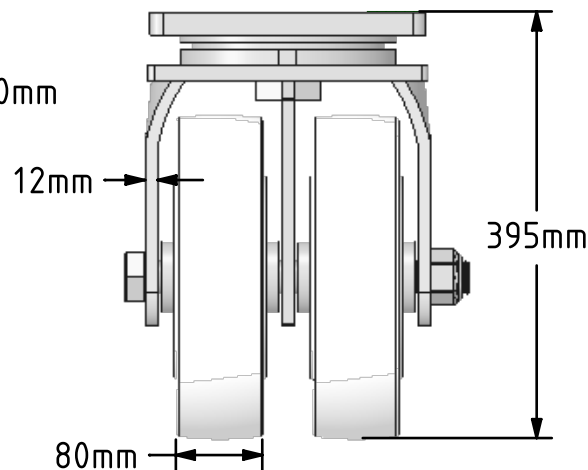
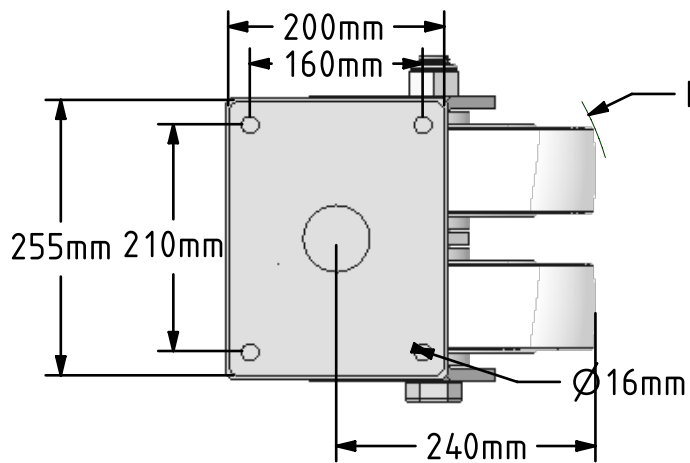
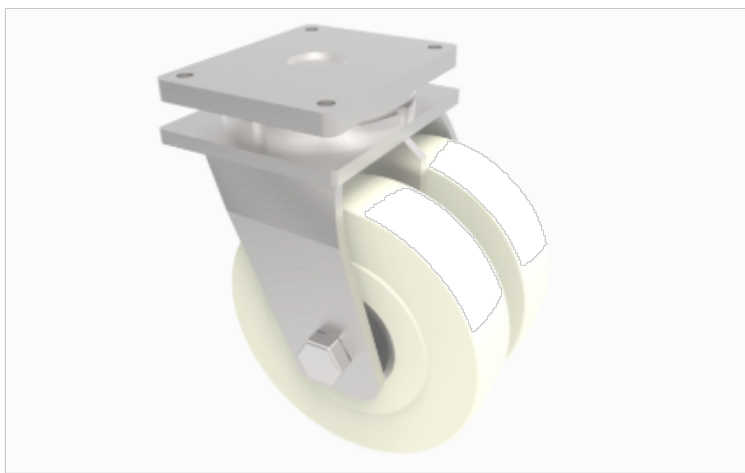



DRAWING DISCLAIMER
 COPYRIGHT OF THIS DRAWING IS RESERVED BY BIL GROUP LTD. IT IS ISSUED ON CONDITION THAT IT IS NOT REPRODUCED, COPIED, OR DISCLOSED TO A THIRD PARTY EITHER WHOLLY OR IN PART WITHOUT THE CONSENT IN WRITING OF BIL GROUP LTD.



Description:
 2BZXXH300NYBJ

Fabricated twin wheel swivel castor with a top plate fixing fitted with heavy duty white nylon wheels with ball bearings. Wheel diameter 300mm, tread width 2 x 80mm, overall height 395mm, plate size 255 x 200mm, hole centres 210mm x 160mm. Load capacity 7500kg.



	NAME	DATE	BIL Group Ltd, Porte Marsh Road, Calne Wiltshire, SN11 9BW, United Kingdom Tel +44 (0)1249 822 222 Fax: +44 (0)1249 822 300 www.bilgroup.co.uk	
DRAWN	Matt	02/05/17		
APPROVED BY	Tim W	02/05/17		
SCALE	1:7	02/05/17		
WEIGHT	44.776kg	02/05/17		
UNLESS OTHERWISE SPECIFIED DIMENSIONS ARE IN MILLIMETRES			TITLE	
Unspecified Tolerances Machining ± 0.25mm Fabrication ± 1mm			2BZXXH300NYBJ	
			SIZE A4	DWG NO. BILCW032BZXXH300NYBJ_01
			FILE NAME BILCW032BZXXH300NYBJ_01.PDF	REV 1
				SHEET 1 OF 1