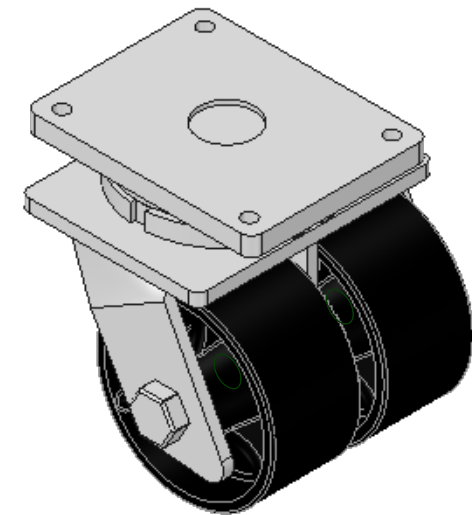
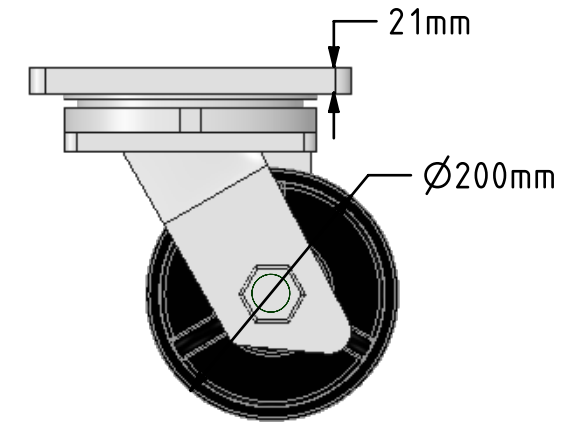
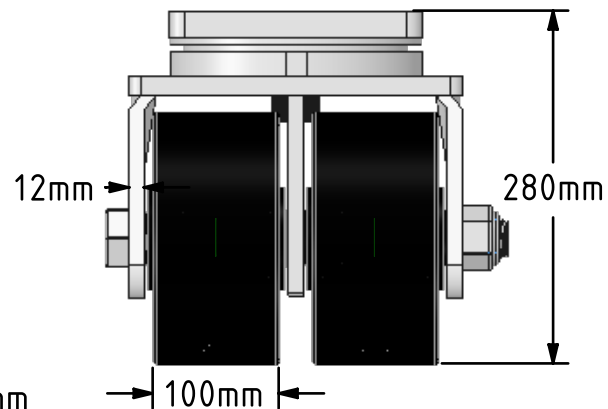
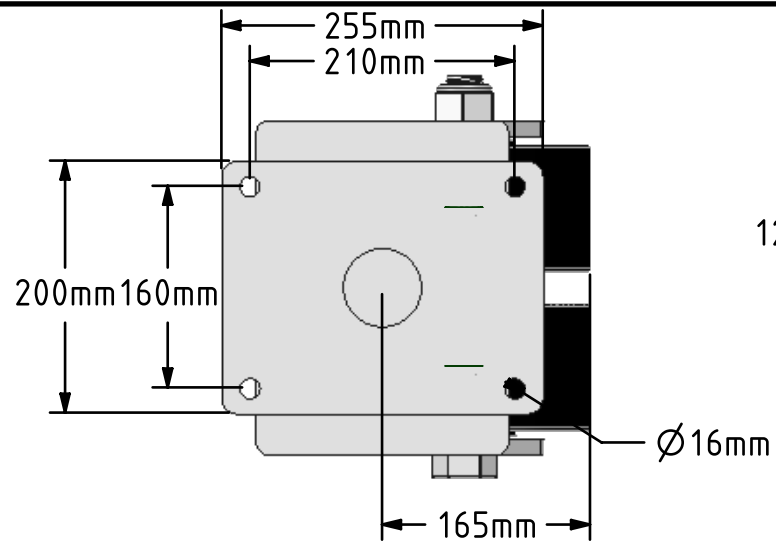


**DRAWING DISCLAIMER**

COPYRIGHT OF THIS DRAWING IS RESERVED BY BIL GROUP LTD. IT IS ISSUED ON CONDITION THAT IT IS NOT REPRODUCED, COPIED, OR DISCLOSED TO A THIRD PARTY EITHER WHOLLY OR IN PART WITHOUT THE CONSENT IN WRITING OF BIL GROUP LTD.

**Description:**

2BZXXH200STTT

Fabricated zinc plated swivel castor fitted with 2 black painted ductile steel wheel with taper roller bearings. Wheel diameter 200mm, tread 100mm, overall height 280mm, top plate 255mm x 200mm, hole centres 210mm x 160mm. Load capacity 7200kg.



	NAME	DATE
DRAWN	Matt	02/01/18
APPROVED BY	Tim W	02/01/18
SCALE	1:6	02/01/18
WEIGHT	47.884kg	02/01/18

UNLESS OTHERWISE SPECIFIED DIMENSIONS ARE IN MILLIMETRES

Unspecified Tolerances  
Machining  $\pm 0.25\text{mm}$   
Fabrication  $\pm 1\text{mm}$



BIL Group Ltd, Porte Marsh Road, Calne  
Wiltshire, SN11 9BW, United Kingdom  
Tel +44 (0)1249 822 222 Fax: +44 (0)1249 822 300  
www.bilgroup.co.uk

TITLE

2BZXXH200STTT

SIZE

DWG NO.

A4

BILCW032BZXXH200STTT\_01

REV

1

FILE NAME BILCW032BZXXH200STTT\_01.PDF

SHEET 1 OF 1