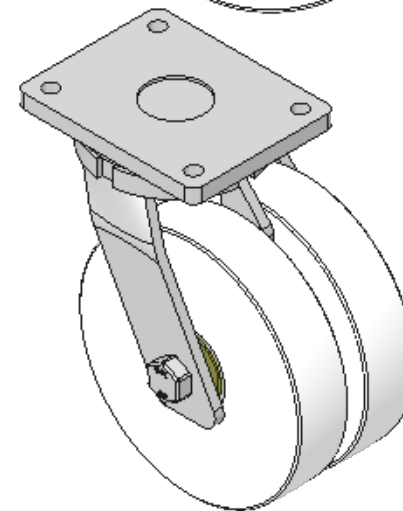
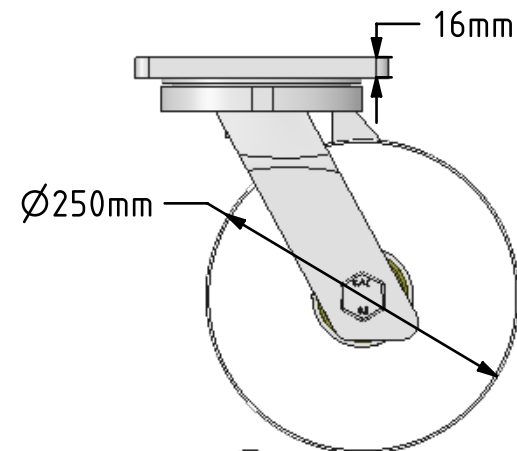
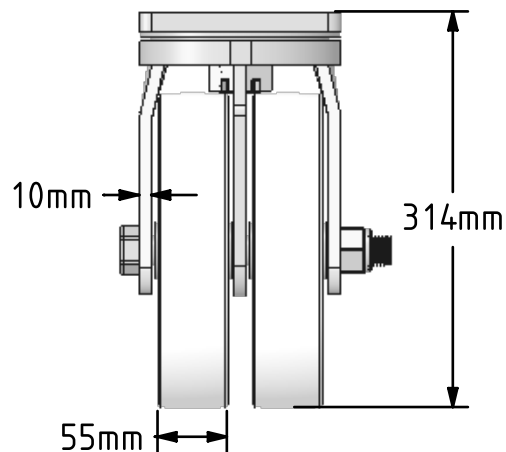
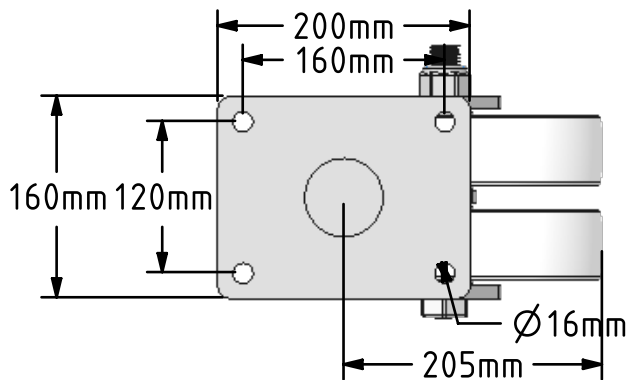



DRAWING DISCLAIMER
 COPYRIGHT OF THIS DRAWING IS RESERVED BY BIL GROUP LTD. IT IS ISSUED ON CONDITION THAT IT IS NOT REPRODUCED, COPIED, OR DISCLOSED TO A THIRD PARTY EITHER WHOLLY OR IN PART WITHOUT THE CONSENT IN WRITING OF BIL GROUP LTD.



Description:
 2BZQXL250NYBJ

Fabricated twin wheeled swivel castor fitted with heavy duty white nylon wheels with ball bearings. Wheel diameter 250mm, Tread width 55mm + 55mm, Overall height 314mm, Top plate 200mm x 160mm, Hole centres 160mm x 120mm, Load capacity 5000kg



	NAME	DATE	BIL Group Ltd, Porte Marsh Road, Calne Wiltshire, SN11 9BW, United Kingdom Tel +44 (0)1249 822 222 Fax: +44 (0)1249 822 300 www.bilgroup.co.uk	
DRAWN	Matt	21/02/18	 TITLE 2BZQXL250NYBJ	
APPROVED BY	Tim W	21/02/18		
SCALE	1:6	21/02/18		
WEIGHT	16.212kg	21/02/18		
UNLESS OTHERWISE SPECIFIED DIMENSIONS ARE IN MILLIMETRES			SIZE	DWG NO.
Unspecified Tolerances Machining ± 0.25mm Fabrication ± 1mm			A4	BILCW032BZQXL250NYBJ_01
			REV	1
			FILE NAME	BILCW032BZQXL250NYBJ_01.PDF SHEET 1 OF 1