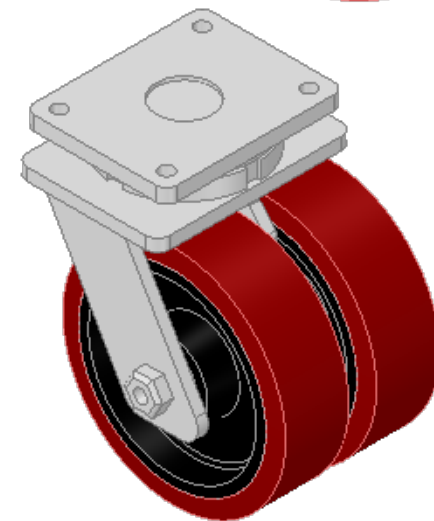
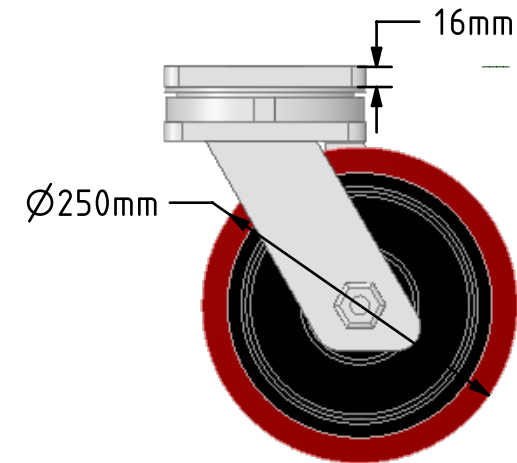
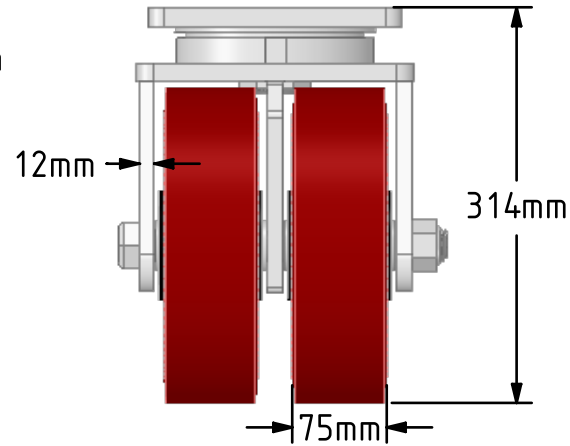
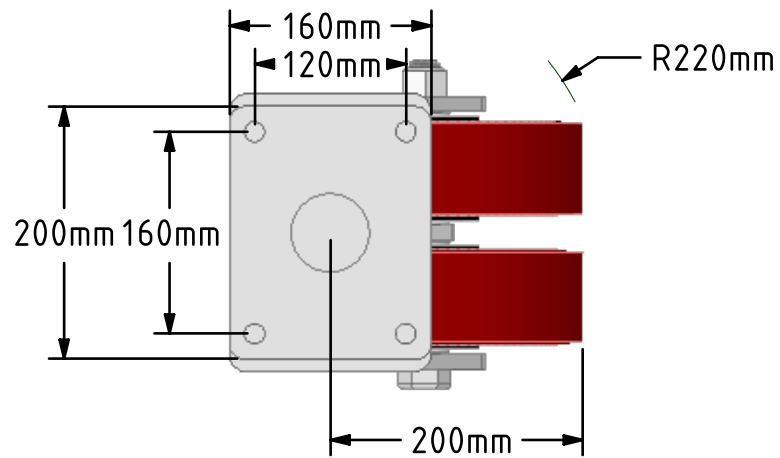


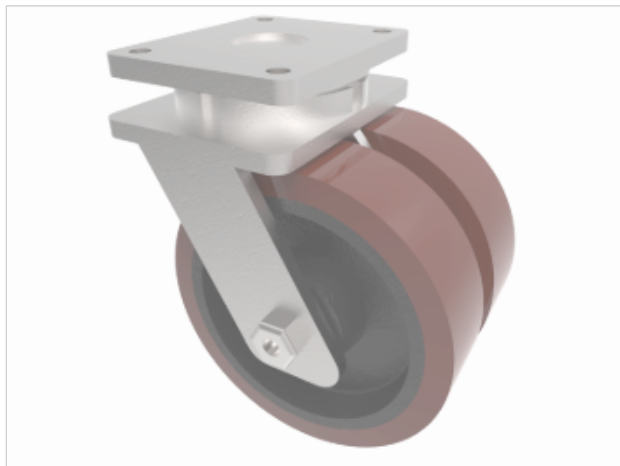
**DRAWING DISCLAIMER**

COPYRIGHT OF THIS DRAWING IS RESERVED BY BIL GROUP LTD. IT IS ISSUED ON CONDITION THAT IT IS NOT REPRODUCED, COPIED, OR DISCLOSED TO A THIRD PARTY EITHER WHOLLY OR IN PART WITHOUT THE CONSENT IN WRITING OF BIL GROUP LTD.

**Description:**

2BZQX250PTBJ

Twin wheeled swivel castor with a top plate fixing fitted with 2 brown polyurethane wheels on cast iron centres with ball journal bearings. Wheel diameter 2 x 250mm, tread width 2 x 75mm, overall height 314mm, top plate 200mm x 160mm, hole centres 160mm x 120. Load capacity 3600kg.



	NAME	DATE
DRAWN	Matt	19/10/18
APPROVED BY	Chris	19/10/18
SCALE	1:6	19/10/18
WEIGHT	34.234kg	19/10/18

UNLESS OTHERWISE SPECIFIED DIMENSIONS ARE IN MILLIMETRES

Unspecified Tolerances  
Machining  $\pm 0.25\text{mm}$   
Fabrication  $\pm 1\text{mm}$



BIL Group Ltd, Porte Marsh Road, Calne  
Wiltshire, SN11 9BW, United Kingdom  
Tel +44 (0)1249 822 222 Fax: +44 (0)1249 822 300  
www.bilgroup.co.uk

TITLE

2BZQX250PTBJ

SIZE

DWG NO.

A4

BILCW032BZQX250PTBJ\_01

REV

1

FILE NAME BILCW032BZQX250PTBJ\_01.PDF

SHEET 1 OF 1