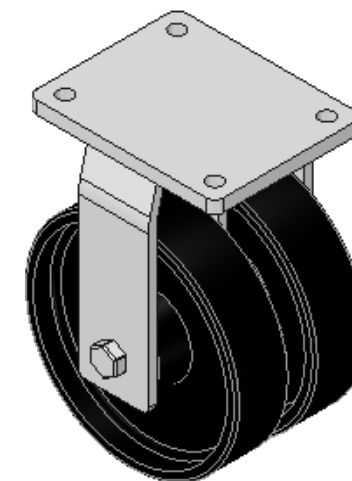
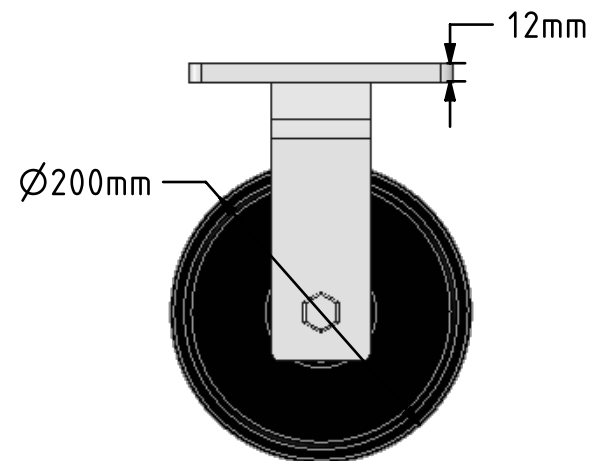
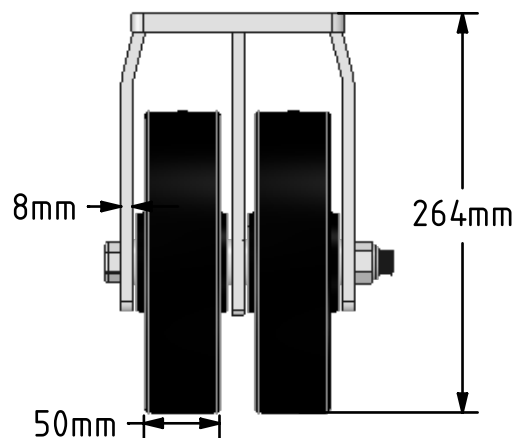
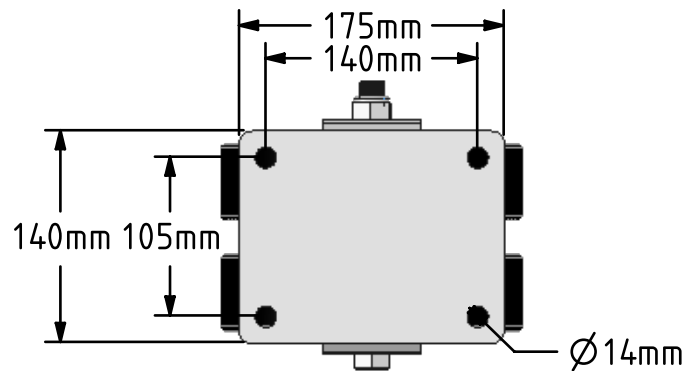


DRAWING DISCLAIMER
 COPYRIGHT OF THIS DRAWING IS RESERVED BY BIL GROUP LTD. IT IS ISSUED ON CONDITION THAT IT IS NOT REPRODUCED, COPIED, OR DISCLOSED TO A THIRD PARTY EITHER WHOLLY OR IN PART WITHOUT THE CONSENT IN WRITING OF BIL GROUP LTD.



Description:
 2BZQF200CIBJ

Twin wheeled fixed castor with a top plate fixing fitted with 2 cast iron wheels with ball journal bearings. Wheel diameter 2 x 200mm, tread width 2 x 50mm, overall height 264mm, top plate 175mm x 140mm, hole centres 140mm x 105. Load capacity 2000kg.



	NAME	DATE
DRAWN	Matt	01/06/18
APPROVED BY	Chris	01/06/18
SCALE	1:5	01/06/18
WEIGHT	14.59kg	01/06/18

UNLESS OTHERWISE SPECIFIED DIMENSIONS ARE IN MILLIMETRES

Unspecified Tolerances
 Machining ± 0.25mm
 Fabrication ± 1mm



BIL Group Ltd, Porte Marsh Road, Calne
 Wiltshire, SN11 9BW, United Kingdom
 Tel +44 (0)1249 822 222 Fax: +44 (0)1249 822 300
 www.bilgroup.co.uk

TITLE

2BZQF200CIBJ

SIZE DWG NO.

A4

BILCW032BZQF200CIBJ_01

REV

1

FILE NAME

BILCW032BZQF200CIBJ_01.PDF

SHEET 1 OF 1