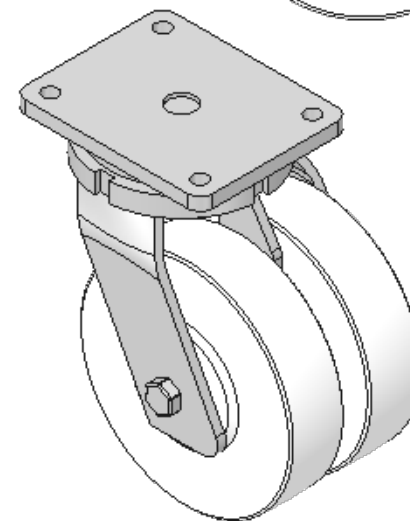
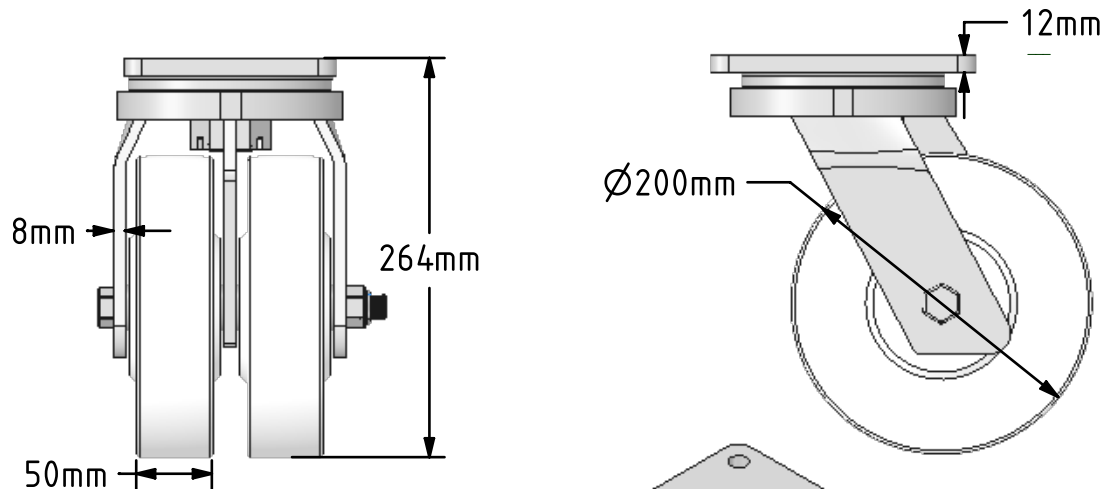
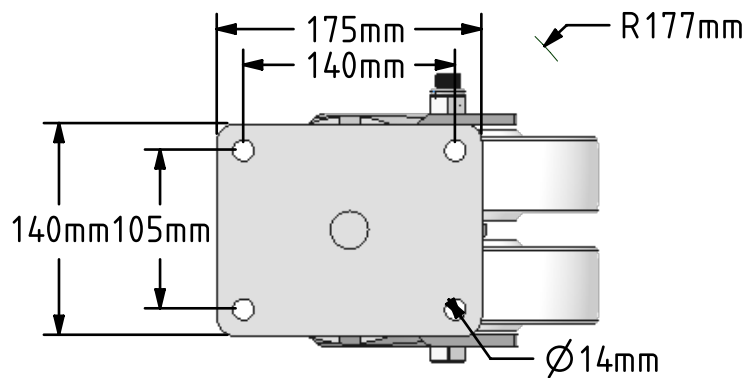



DRAWING DISCLAIMER
 COPYRIGHT OF THIS DRAWING IS RESERVED BY BIL GROUP LTD. IT IS ISSUED ON CONDITION THAT IT IS NOT REPRODUCED, COPIED, OR DISCLOSED TO A THIRD PARTY EITHER WHOLLY OR IN PART WITHOUT THE CONSENT IN WRITING OF BIL GROUP LTD.



Description:
 2BZQ200NYBJHD

Fabricated twin wheel swivel castor with a top plate fixing fitted with 2 heavy white nylon wheels with ball bearings. Wheels diameter 200mm, tread width 2 x 50mm, overall height 264mm, top plate 175mm x 140mm, hole centres 140mm x 105. Load capacity 3000kg.



	NAME	DATE	BIL Group Ltd, Porte Marsh Road, Calne Wiltshire, SN11 9BW, United Kingdom Tel +44 (0)1249 822 222 Fax: +44 (0)1249 822 300 www.bilgroup.co.uk	
DRAWN	Matt	31/05/18		
APPROVED BY	Tim W	31/05/18		
SCALE	1:5	31/05/18		
WEIGHT	11.612kg	31/05/18		
UNLESS OTHERWISE SPECIFIED DIMENSIONS ARE IN MILLIMETRES			SIZE	DWG NO.
Unspecified Tolerances Machining ± 0.25mm Fabrication ± 1mm			A4	BILCW032BZQ200NYBJHD_01
			TITLE	REV
			2BZQ200NYBJHD	
			FILE NAME	SHEET 1 OF 1
			BILCW032BZQ200NYBJHD_01.PDF	1