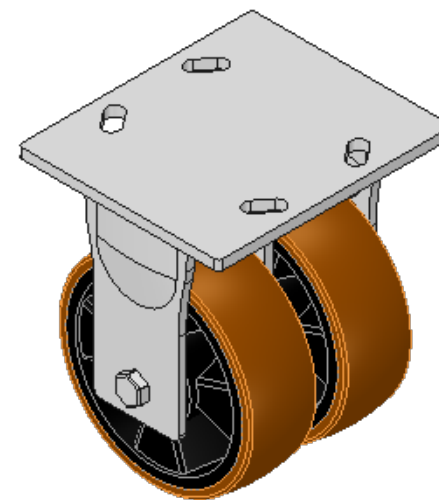
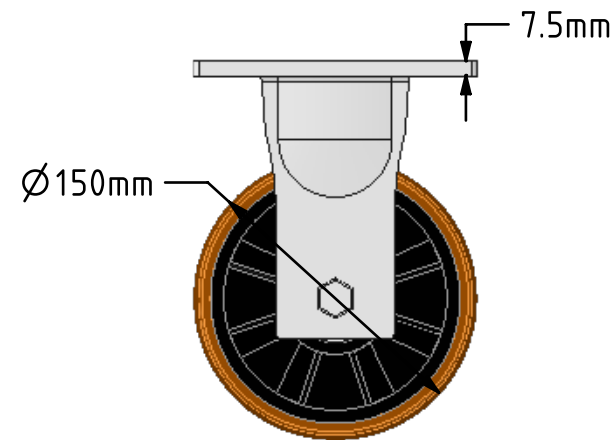
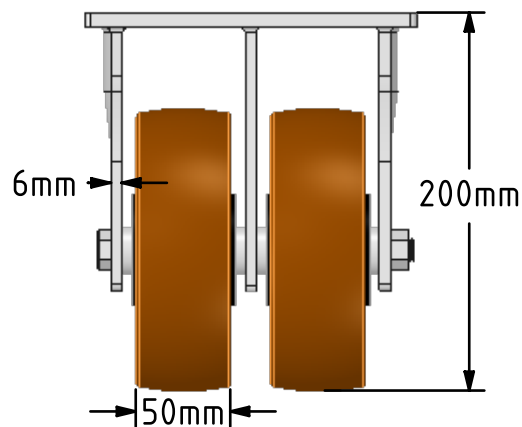
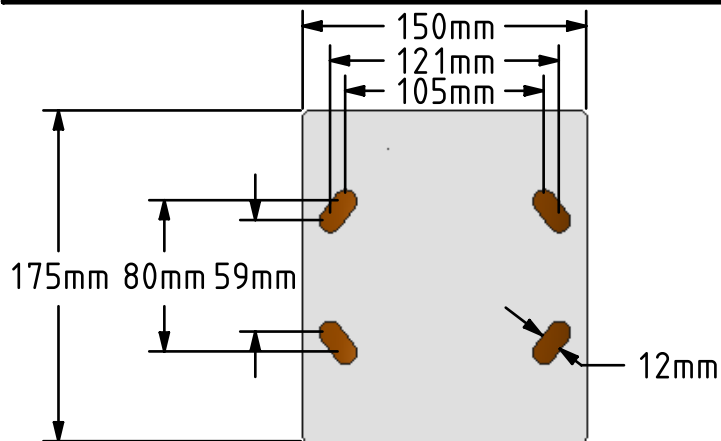



DRAWING DISCLAIMER
 COPYRIGHT OF THIS DRAWING IS RESERVED BY BIL GROUP LTD. IT IS ISSUED ON CONDITION THAT IT IS NOT REPRODUCED, COPIED, OR DISCLOSED TO A THIRD PARTY EITHER WHOLLY OR IN PART WITHOUT THE CONSENT IN WRITING OF BIL GROUP LTD.



Description:
 2BZKF150XPBJ

Fabricated twin wheel fixed castor with a top plate fixing fitted with 2 x brown polyurethane tyred on a black nylon centred wheel with ball bearings. Wheel diameters 150mm, tread width 45mm x2, overall height 200mm, top plate 175mm x 150mm, hole centres 105mm x 80mm or 175mm x 150mm. Load capacity 1200kg.



	NAME	DATE	BIL Group Ltd, Porte Marsh Road, Calne Wiltshire, SN11 9BW, United Kingdom Tel +44 (0)1249 822 222 Fax: +44 (0)1249 822 300 www.bilgroup.co.uk	
DRAWN	Matt	22/05/18		
APPROVED BY	Chris	22/05/18		
SCALE	1:4	22/05/18		
WEIGHT	4.376kg	22/05/18		
UNLESS OTHERWISE SPECIFIED DIMENSIONS ARE IN MILLIMETRES			SIZE	DWG NO.
Unspecified Tolerances Machining ± 0.25mm Fabrication ± 1mm			A4	BILCW032BZKF150XPBJ_01
			TITLE	REV
			2BZKF150XPBJ	
			FILE NAME	SHEET 1 OF 1
			BILCW032BZKF150XPBJ_01.PDF	