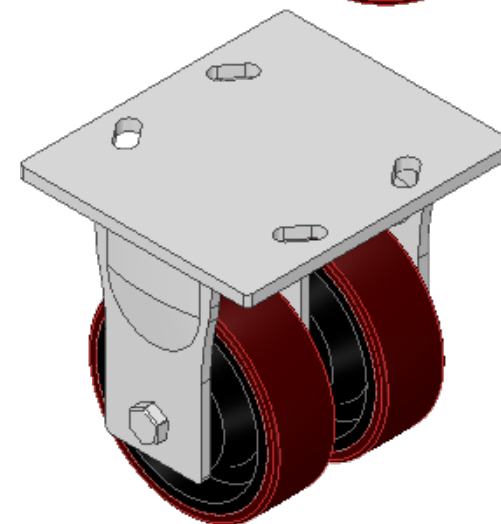
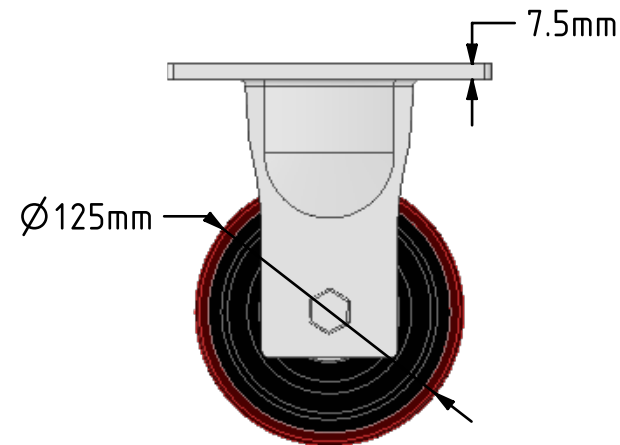
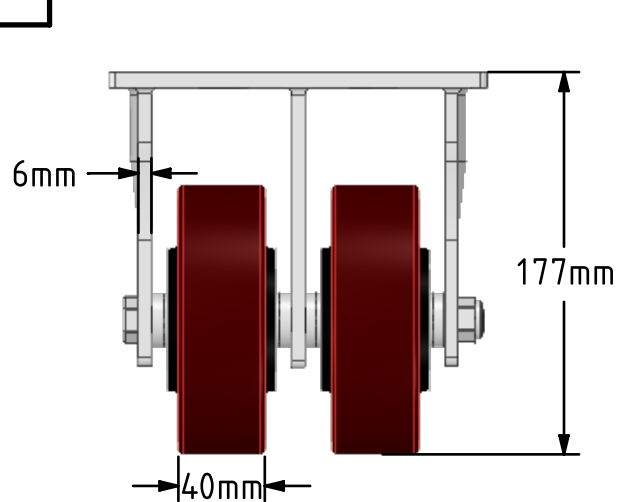
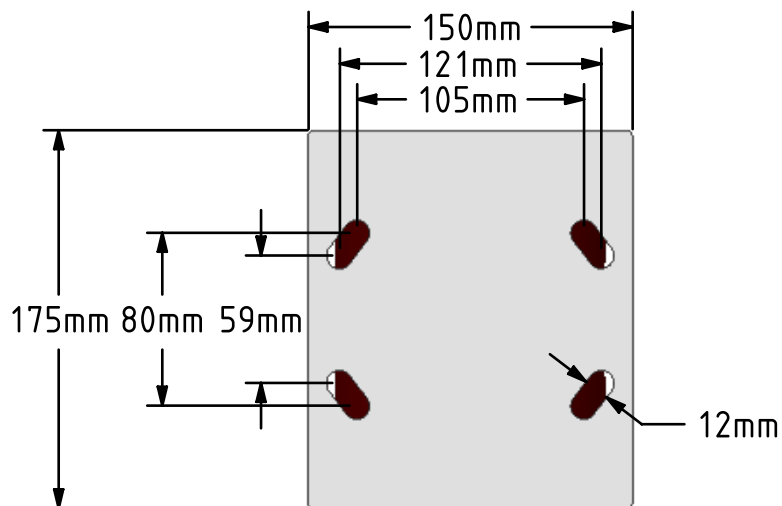
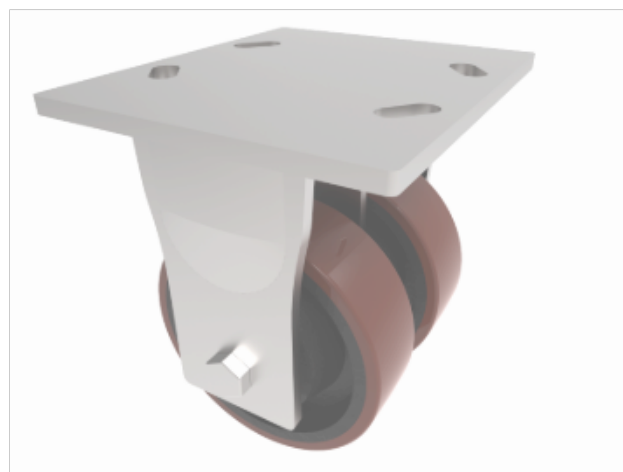


DRAWING DISCLAIMER
 COPYRIGHT OF THIS DRAWING IS RESERVED BY BIL GROUP LTD. IT IS ISSUED ON CONDITION THAT IT IS NOT REPRODUCED, COPIED, OR DISCLOSED TO A THIRD PARTY EITHER WHOLLY OR IN PART WITHOUT THE CONSENT IN WRITING OF BIL GROUP LTD.



Description:
 2BZKF125PTBJ

Twin wheeled fabricated fixed castor with a top plate fixing fitted with 2 x polyurethane on cast iron centred wheels with ball journal bearings. Wheel diameter 2 x 125mm, tread width 2 x 40mm, overall height 177mm, top plate 175mm x 150mm, hole centres 105mm x 80mm or 121mm x 59mm. Load capacity 800kg.



	NAME	DATE
DRAWN	Matt	07/01/19
APPROVED BY	Chris	07/01/19
SCALE	2:7	07/01/19
WEIGHT	6.507kg	07/01/19

UNLESS OTHERWISE SPECIFIED DIMENSIONS ARE IN MILLIMETRES

Unspecified Tolerances
 Machining ± 0.25mm
 Fabrication ± 1mm



BIL Group Ltd, Porte Marsh Road, Calne
 Wiltshire, SN11 9BW, United Kingdom
 Tel +44 (0)1249 822 222 Fax: +44 (0)1249 822 300
 www.bilgroup.co.uk

TITLE

2BZKF125PTBJ

SIZE DWG NO.

A4

BILCW032BZKF125PTBJ_01

REV

1

FILE NAME

BILCW032BZKF125PTBJ_01.PDF

SHEET 1 OF 1