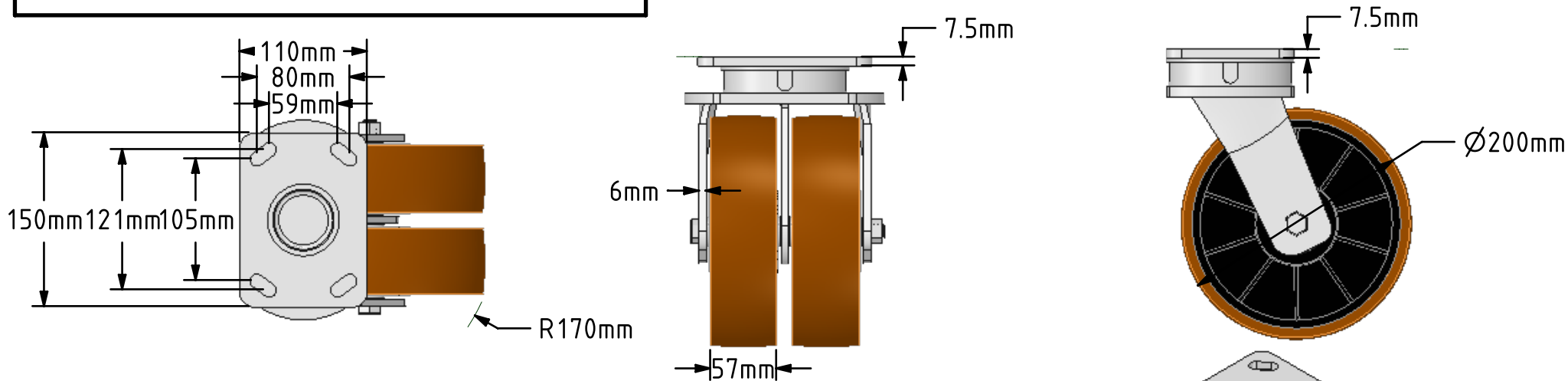
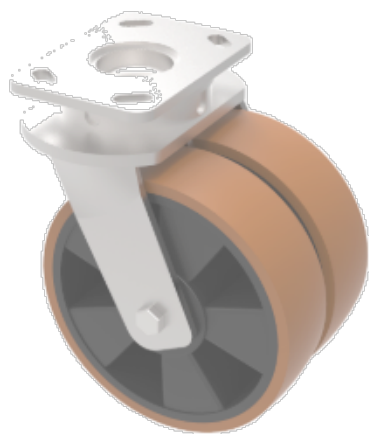



DRAWING DISCLAIMER  
 COPYRIGHT OF THIS DRAWING IS RESERVED BY BIL GROUP LTD. IT IS ISSUED ON CONDITION THAT IT IS NOT REPRODUCED, COPIED, OR DISCLOSED TO A THIRD PARTY EITHER WHOLLY OR IN PART WITHOUT THE CONSENT IN WRITING OF BIL GROUP LTD.



Description:  
 2BZK200XPBJ

Twin-wheeled fabricated swivel castor with a top plate fixing and 4 way directional lock fitted with 2 x brown polyurethane tyred black nylon centred centred ball bearing wheels. Wheel diameter 200mm, tread width 57mm, overall height 200mm, top plate 150mm x 110mm, hole centers 105mm x 80mm or 121mm x 59mm. Load capacity 1500kg.



	NAME	DATE	BIL Group Ltd, Porte Marsh Road, Calne Wiltshire, SN11 9BW, United Kingdom Tel +44 (0)1249 822 222 Fax: +44 (0)1249 822 300 www.bilgroup.co.uk	
DRAWN	Matt	25/01/17		
APPROVED BY	Tim W	25/01/17		
SCALE	1:5	25/01/17		
WEIGHT	6.062kg	25/01/17		
UNLESS OTHERWISE SPECIFIED DIMENSIONS ARE IN MILLIMETRES			SIZE	DWG NO.
Unspecified Tolerances Machining ± 0.25mm Fabrication ± 1mm			A4	BILCW032BZK200XPBJ_01
			TITLE	REV
			2BZK200XPBJ	
			FILE NAME	SHEET 1 OF 1
			BILCW032BZK200XPBJ_01.PDF	1