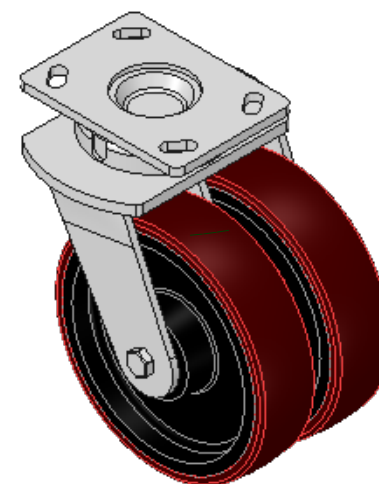
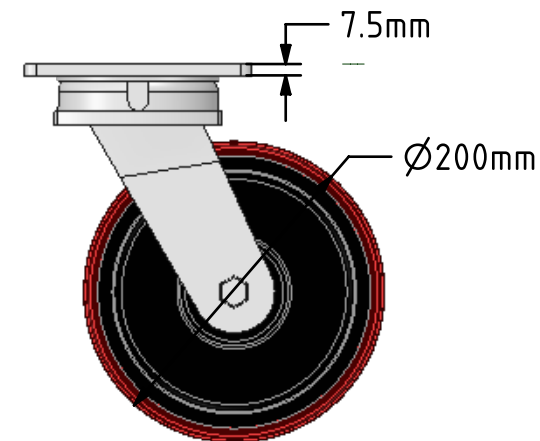
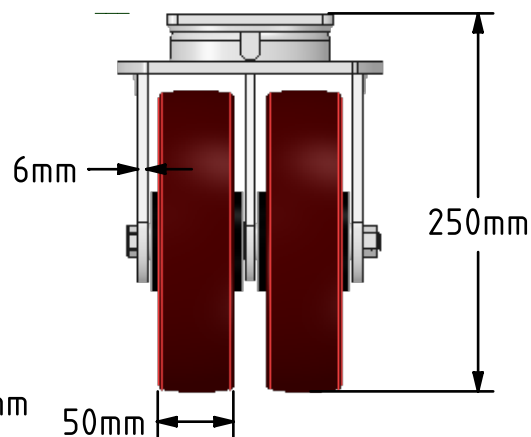
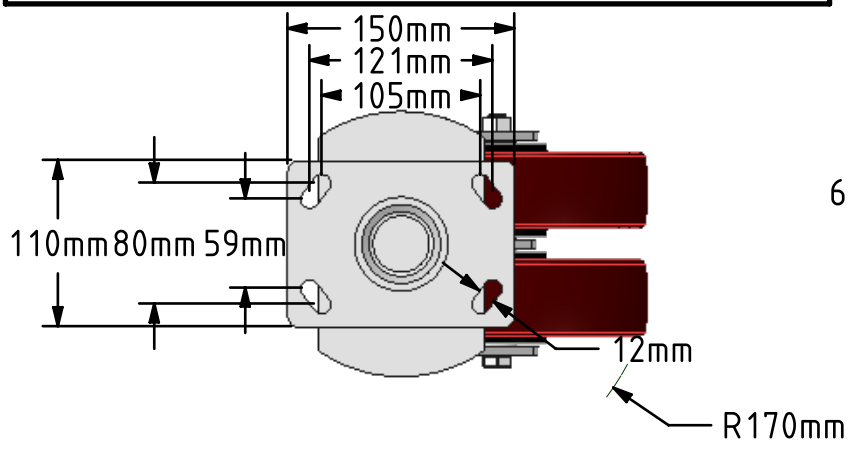


DRAWING DISCLAIMER
 COPYRIGHT OF THIS DRAWING IS RESERVED BY BIL GROUP LTD. IT IS ISSUED ON CONDITION THAT IT IS NOT REPRODUCED, COPIED, OR DISCLOSED TO A THIRD PARTY EITHER WHOLLY OR IN PART WITHOUT THE CONSENT IN WRITING OF BIL GROUP LTD.



Description:
 2BZK200PTBJ

Twin wheeled swivel castor with a top plate fixing fitted with 2 polyurethane wheels on cast iron centres with ball bearings. Wheel diameter 2 x 200mm, tread width 2 x 50mm, overall height 250mm, top plate 150mm x 110mm, hole centres 105mm x 80mm or 121mm x 59mm. Load capacity 1500kg.



	NAME	DATE
DRAWN	Matt	06/09/17
APPROVED BY	Chris	06/09/17
SCALE	1:5	06/09/17
WEIGHT	12.046kg	06/09/17

UNLESS OTHERWISE SPECIFIED DIMENSIONS ARE IN MILLIMETRES

Unspecified Tolerances
 Machining ± 0.25mm
 Fabrication ± 1mm



BIL Group Ltd, Porte Marsh Road, Calne
 Wiltshire, SN11 9BW, United Kingdom
 Tel +44 (0)1249 822 222 Fax: +44 (0)1249 822 300
 www.bilgroup.co.uk

TITLE

2BZK200PTBJ

SIZE A4

DWG NO. BILCW032BZK200PTBJ_01

REV 1

FILE NAME BILCW032BZK200PTBJ_01.PDF

SHEET 1 OF 1