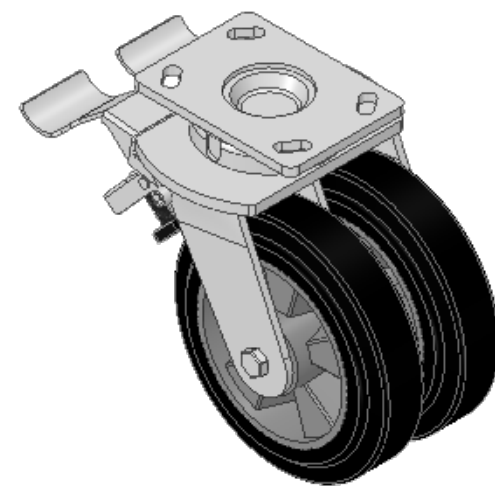
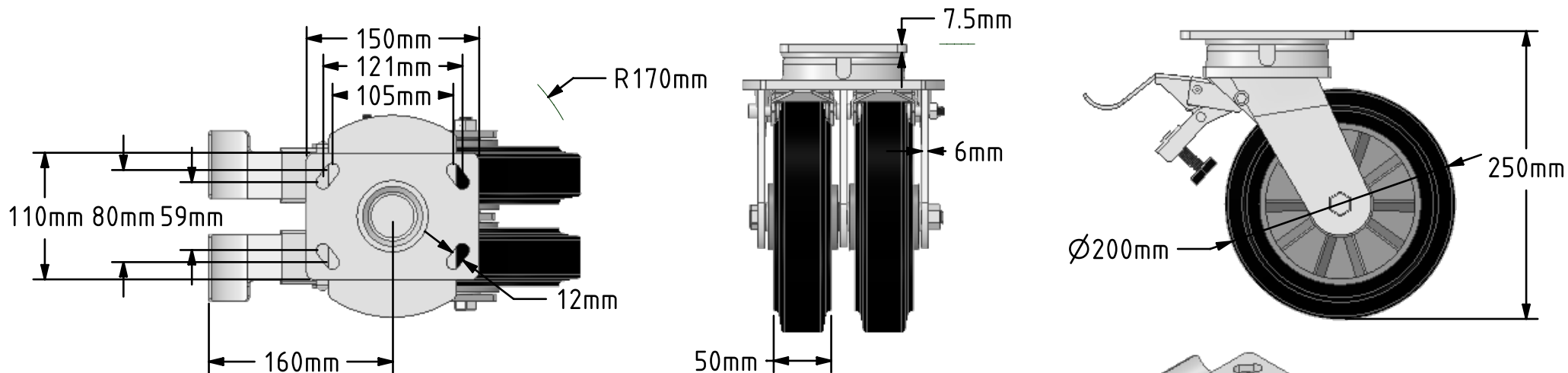



DRAWING DISCLAIMER  
 COPYRIGHT OF THIS DRAWING IS RESERVED BY BIL GROUP LTD. IT IS ISSUED ON CONDITION THAT IT IS NOT REPRODUCED, COPIED, OR DISCLOSED TO A THIRD PARTY EITHER WHOLLY OR IN PART WITHOUT THE CONSENT IN WRITING OF BIL GROUP LTD.



Description:  
 2BZK200ERBJDBR

Fabricated swivel castor with a top plate fixing fitted with 2 x black 65 shore A elastic rubber tyre on aluminium centred wheels with ball bearings and a double wheel brake. Wheel diameter 200mm, tread width 50mm x 2, overall height 250mm, plate size 150mm x 110mm, hole centres 105mm x 80mm or 121mm x 59mm. Load capacity 1000kg. REACH compliant also PAH-Free rubber to confirm to EU-directive 2005/69/EC



	NAME	DATE	BIL Group Ltd, Porte Marsh Road, Calne Wiltshire, SN11 9BW, United Kingdom Tel +44 (0)1249 822 222 Fax: +44 (0)1249 822 300 www.bilgroup.co.uk	
DRAWN	Matt	10/12/18		
APPROVED BY	Tim W	10/12/18		
SCALE	1:5	10/12/18		
WEIGHT	8.691kg	10/12/18		
UNLESS OTHERWISE SPECIFIED DIMENSIONS ARE IN MILLIMETRES			SIZE	DWG NO.
Unspecified Tolerances Machining ± 0.25mm Fabrication ± 1mm			A4	BILCW032BZK200ERBJDBR_02
			TITLE	REV
			2BZK200ERBJDBR	
			FILE NAME	SHEET 1 OF 1
			BILCW032BZK200ERBJDBR_02.PDF	