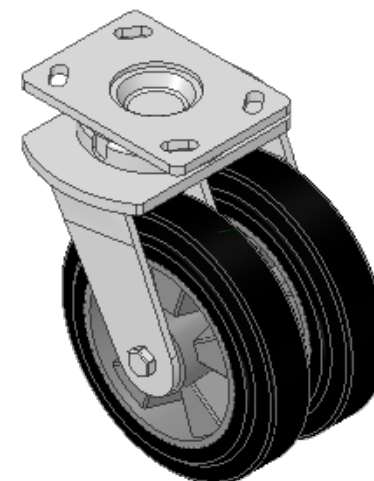
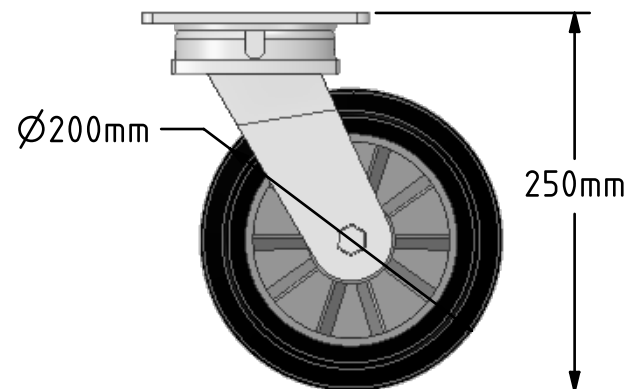
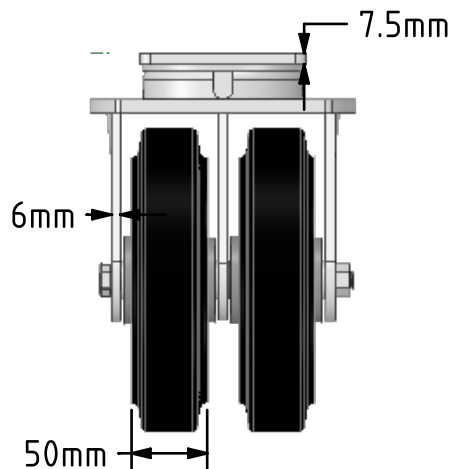
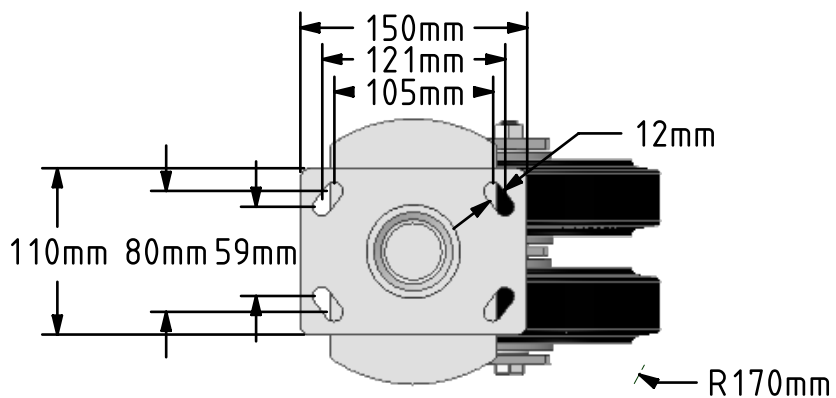


DRAWING DISCLAIMER
 COPYRIGHT OF THIS DRAWING IS RESERVED BY BIL GROUP LTD. IT IS ISSUED ON CONDITION THAT IT IS NOT REPRODUCED, COPIED, OR DISCLOSED TO A THIRD PARTY EITHER WHOLLY OR IN PART WITHOUT THE CONSENT IN WRITING OF BIL GROUP LTD.



Description:
 2BZK200ERBJ

Fabricated swivel castor with a top plate fixing fitted with 2 x black 65 shore A elastic rubber tyre on aluminium centred wheels with ball bearings. Wheel diameter 200mm, tread width 50mm x 2, overall height 250mm, plate size 150mm x 110mm, hole centres 105mm x 80mm or 121mm x 59mm. Load capacity 1000kg at 4kph and 400kg at 10kph. REACH compliant also PAH-Free rubber to confirm to EU-directive 2005/69/EC.



	NAME	DATE
DRAWN	Matt	06/03/19
APPROVED BY	Chris	06/03/19
SCALE	1:5	06/03/19
WEIGHT	7.664kg	06/03/19

UNLESS OTHERWISE SPECIFIED DIMENSIONS ARE IN MILLIMETRES

Unspecified Tolerances
 Machining ± 0.25mm
 Fabrication ± 1mm



BIL Group Ltd, Porte Marsh Road, Calne
 Wiltshire, SN11 9BW, United Kingdom
 Tel +44 (0)1249 822 222 Fax: +44 (0)1249 822 300
 www.bilgroup.co.uk

TITLE

2BZK200ERBJ

SIZE DWG NO.
 A4 BILCW032BZK200ERBJ_02

REV
 2

FILE NAME BILCW032BZK200ERBJ_02.PDF

SHEET 1 OF 1