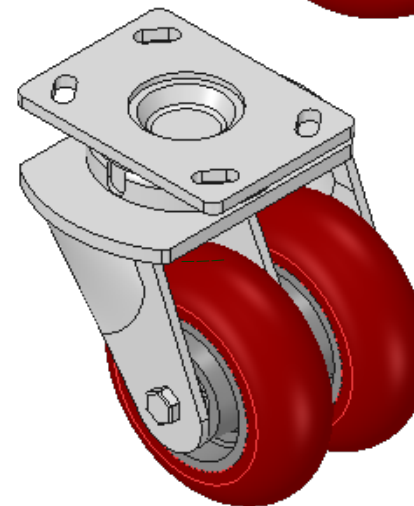
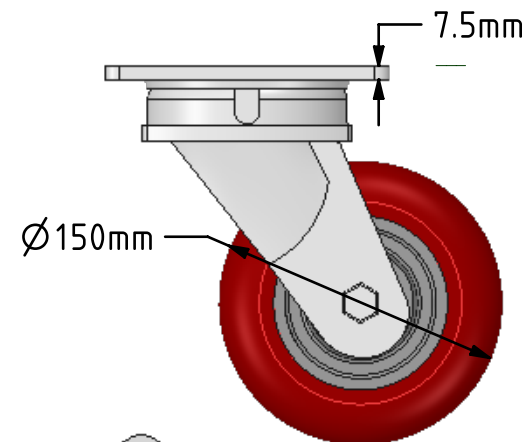
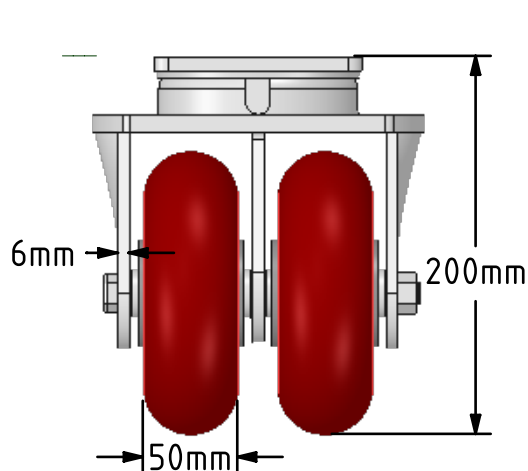
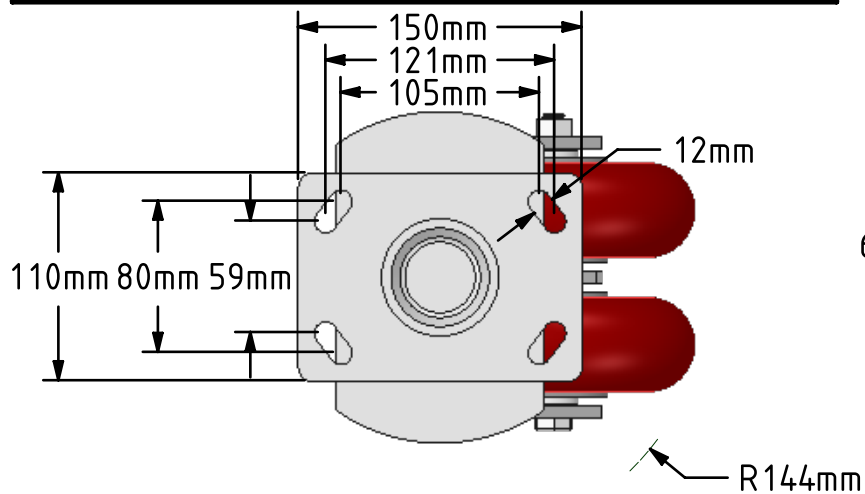


DRAWING DISCLAIMER
 COPYRIGHT OF THIS DRAWING IS RESERVED BY BIL GROUP LTD. IT IS ISSUED ON CONDITION THAT IT IS NOT REPRODUCED, COPIED, OR DISCLOSED TO A THIRD PARTY EITHER WHOLLY OR IN PART WITHOUT THE CONSENT IN WRITING OF BIL GROUP LTD.



Description:
 2BZK150RPTABJ

Twin wheel fabricated swivel castor with a top plate fixing fitted with 2 brown ergonomic polyurethane tyred aluminium centred wheel with a ball bearing. Wheel diameter 150mm, tread width 50mm, overall height 200mm, plate size 150mm x 110mm, hole centres 105mm x 80mm or 121mm x 59mm. Load capacity 1150kg.



	NAME	DATE
DRAWN	Matt	22/05/18
APPROVED BY	Tim W	22/05/18
SCALE	1:4	22/05/18
WEIGHT	7.299kg	22/05/18

 BIL Group Ltd, Porte Marsh Road, Calne
 Wiltshire, SN11 9BW, United Kingdom
 Tel +44 (0)1249 822 222 Fax: +44 (0)1249 822 300
 www.bilgroup.co.uk

TITLE	2BZK150RPTABJ	
-------	---------------	--

UNLESS OTHERWISE SPECIFIED DIMENSIONS ARE IN MILLIMETRES		SIZE	DWG NO.	REV
Unspecified Tolerances Machining ± 0.25mm Fabrication ± 1mm		A4	BILCW032BZK150RPTABJ_02	2
FILE NAME		BILCW032BZK150RPTABJ_02.PDF		SHEET 1 OF 1