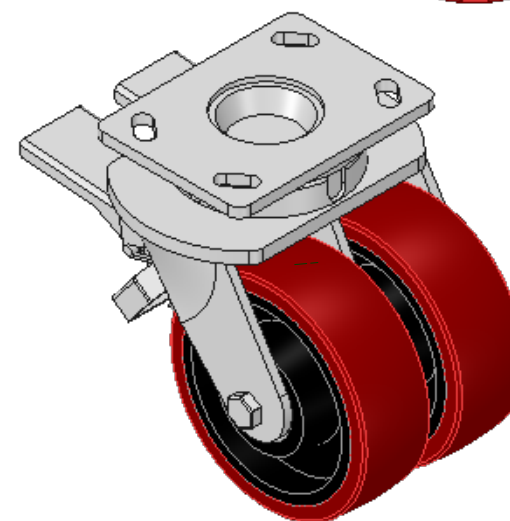
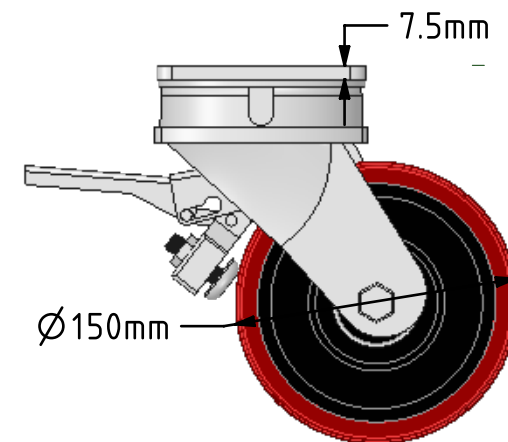
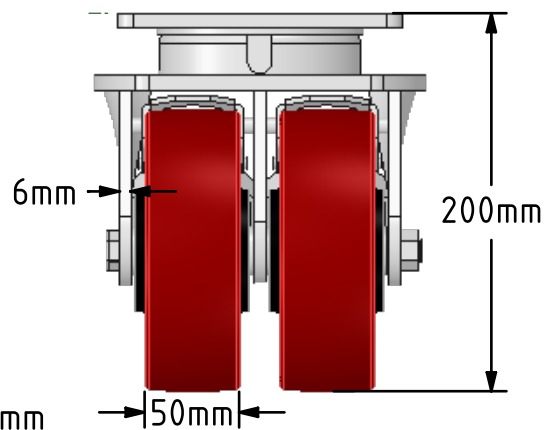
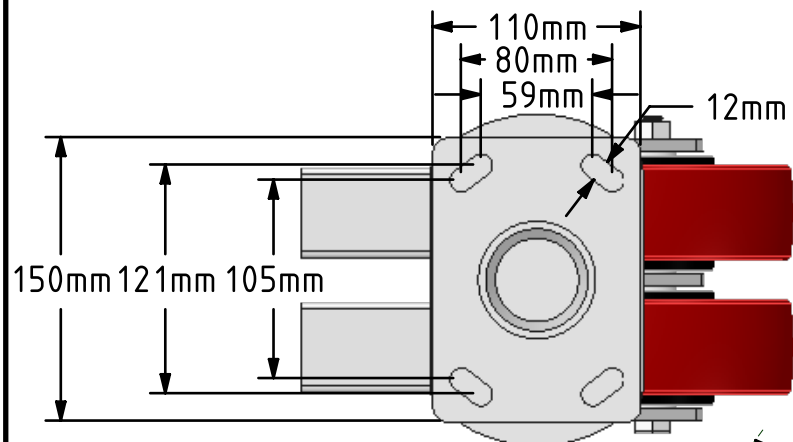
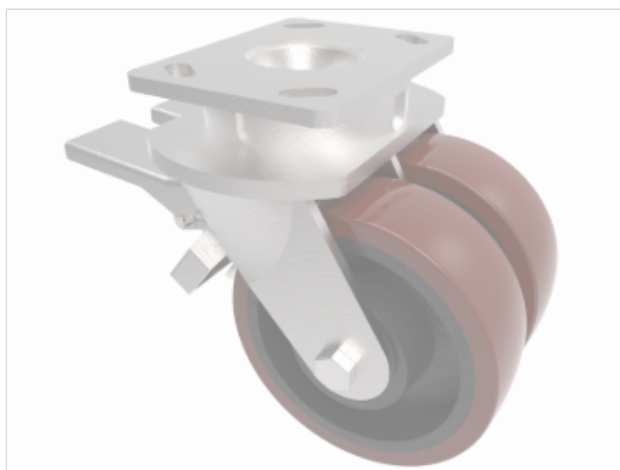


DRAWING DISCLAIMER
 COPYRIGHT OF THIS DRAWING IS RESERVED BY BIL GROUP LTD. IT IS ISSUED ON CONDITION THAT IT IS NOT REPRODUCED, COPIED, OR DISCLOSED TO A THIRD PARTY EITHER WHOLLY OR IN PART WITHOUT THE CONSENT IN WRITING OF BIL GROUP LTD.



Description:
 2BZK150PTBJDBR

Twin wheeled fabricated swivel castor with a top plate fixing fitted with 2 polyurethane tyre cast iron centred wheels with ball bearings with double wheel brake. Wheel diameter 2 x 150mm, tread width 2 x 50mm, overall height 200mm, top plate 150mm x 110mm, hole centres 105mm x 80mm or 121mm x 59mm. Load capacity 1500kg.



	NAME	DATE
DRAWN	Matt	22/05/18
APPROVED BY	Tim W	22/05/18
SCALE	1:4	22/05/18
WEIGHT	10.35kg	22/05/18

UNLESS OTHERWISE SPECIFIED DIMENSIONS ARE IN MILLIMETRES
 Unspecified Tolerances
 Machining ± 0.25mm
 Fabrication ± 1mm

 BIL Group Ltd, Porte Marsh Road, Calne Wiltshire, SN11 9BW, United Kingdom Tel +44 (0)1249 822 222 Fax: +44 (0)1249 822 300 www.bilgroup.co.uk		
2BZK150PTBJDBR		
SIZE	DWG NO.	REV
A4	BILCW032BZK150PTBJDBR_02	1
FILE NAME	BILCW032BZK150PTBJDBR_02.PDF SHEET 1 OF 1	