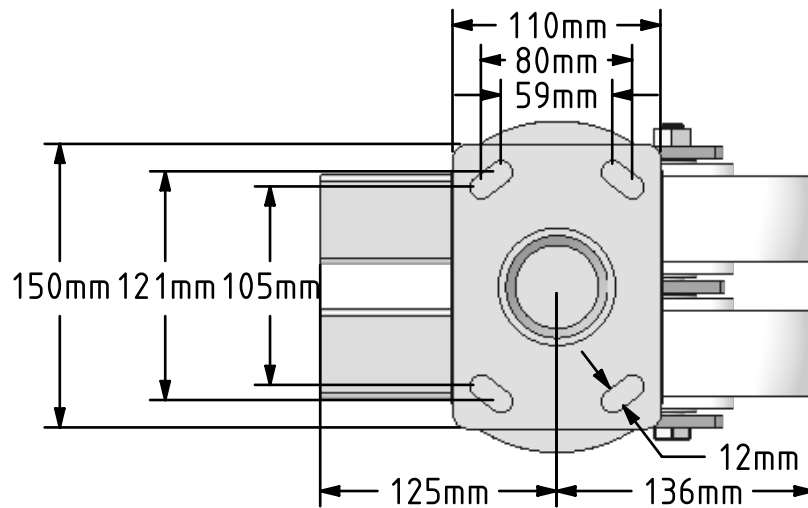


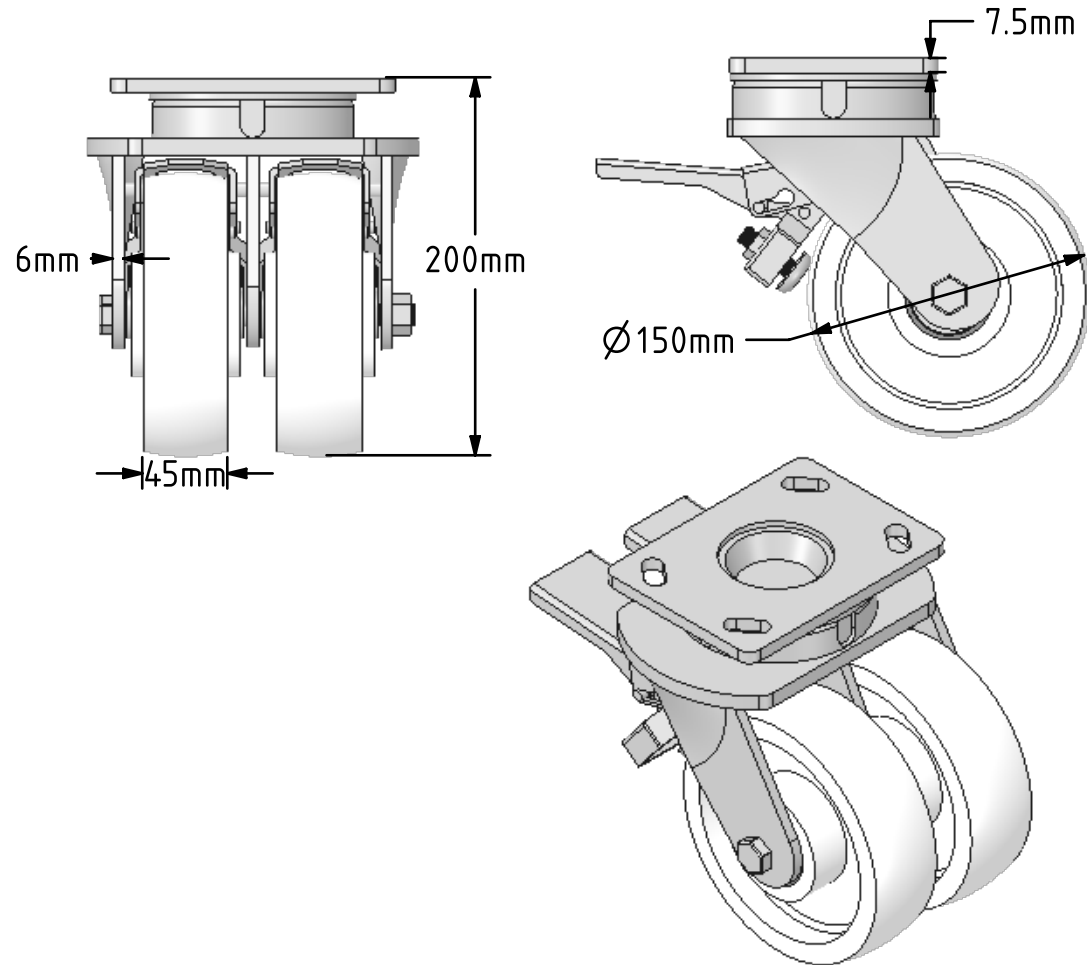
DRAWING DISCLAIMER


COPYRIGHT OF THIS DRAWING IS RESERVED BY BIL GROUP LTD. IT IS ISSUED ON CONDITION THAT IT IS NOT REPRODUCED, COPIED, OR DISCLOSED TO A THIRD PARTY EITHER WHOLLY OR IN PART WITHOUT THE CONSENT IN WRITING OF BIL GROUP LTD.

**Description:**

2BZK150NYBJDBR

Twin wheeled fabricated swivel castor with a top plate fixing fitted with 2 x white nylon wheels with ball bearings and a double wheel brake. Wheel diameter 2 x 150mm, tread width 2 x 45mm, overall height 200mm, top plate 150mm x 110mm, hole centres 105mm x 80mm or 121mm x 59mm. Load capacity 1500kg.



	NAME	DATE	 BIL Group Ltd, Porte Marsh Road, Calne Wiltshire, SN11 9BW, United Kingdom Tel +44 (0)1249 822 222 Fax: +44 (0)1249 822 300 www.bilgroup.co.uk	
DRAWN	Matt	18/05/18		
APPROVED BY		18/05/18		
SCALE	1:4	18/05/18		
WEIGHT	6.97kg	18/05/18		
UNLESS OTHERWISE SPECIFIED DIMENSIONS ARE IN MILLIMETRES			TITLE	
Unspecified Tolerances Machining $\pm 0.25\text{mm}$ Fabrication $\pm 1\text{mm}$			2BZK150NYBJDBR	
			SIZE A4	REV 2
			FILE NAME BILCW032BZK150NYBJDBR_02.SCD0C SHEET 1 OF 1	