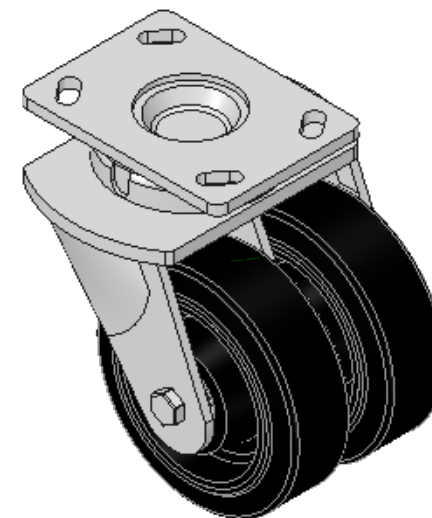
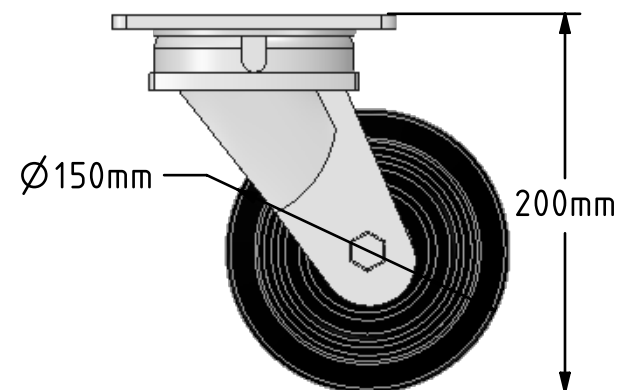
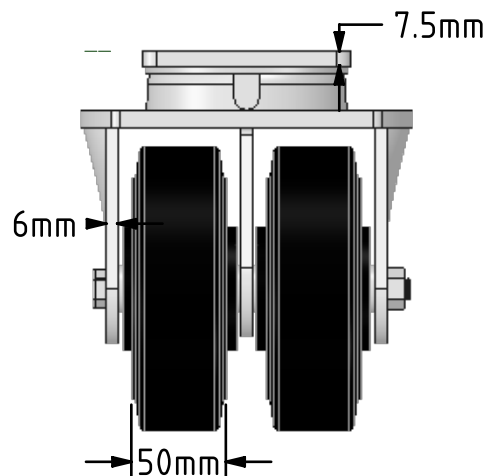
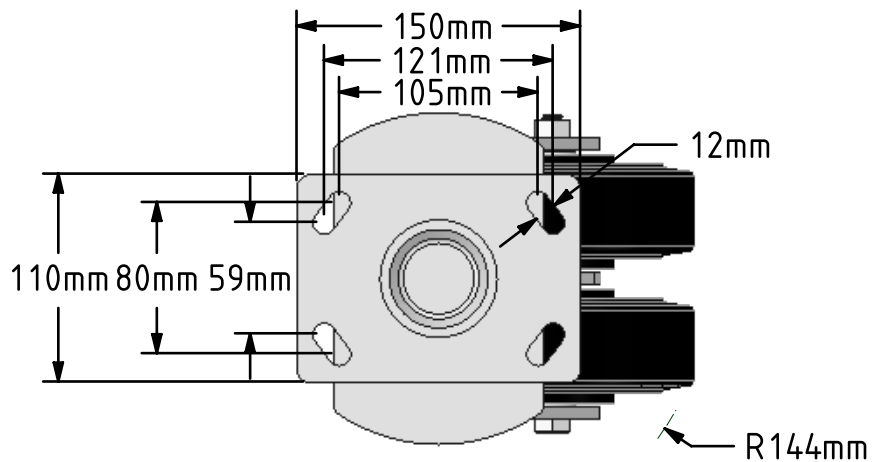


DRAWING DISCLAIMER
 COPYRIGHT OF THIS DRAWING IS RESERVED BY BIL GROUP LTD. IT IS ISSUED ON CONDITION THAT IT IS NOT REPRODUCED, COPIED, OR DISCLOSED TO A THIRD PARTY EITHER WHOLLY OR IN PART WITHOUT THE CONSENT IN WRITING OF BIL GROUP LTD.



Description:
 2BZK150CRBJ

Twin wheeled fabricated swivel castor with a top plate fixing fitted with 2 x elastic rubber tyred on cast iron wheels with ball bearings. Wheel diameter 150mm, tread width 50mm per wheel, overall height 200mm, top plate 150mm x 110mm, hole centers 105mm x 80mm or 121mm x 59mm. Load capacity 700kg.



	NAME	DATE
DRAWN	Matt	21/05/18
APPROVED BY	Chris	21/05/18
SCALE	1:4	21/05/18
WEIGHT	9.849kg	21/05/18

 BIL Group Ltd, Porte Marsh Road, Calne
 Wiltshire, SN11 9BW, United Kingdom
 Tel +44 (0)1249 822 222 Fax: +44 (0)1249 822 300
 www.bilgroup.co.uk

TITLE	2BZK150CRBJ	
-------	-------------	--

UNLESS OTHERWISE SPECIFIED DIMENSIONS ARE IN MILLIMETRES
 Unspecified Tolerances
 Machining ± 0.25mm
 Fabrication ± 1mm

SIZE	DWG NO.	REV
A4	BILCW032BZK150CRBJ_01	1
FILE NAME	BILCW032BZK150CRBJ_01.PDF SHEET 1 OF 1	