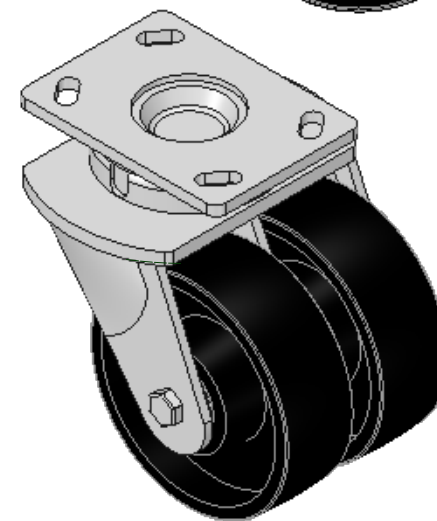
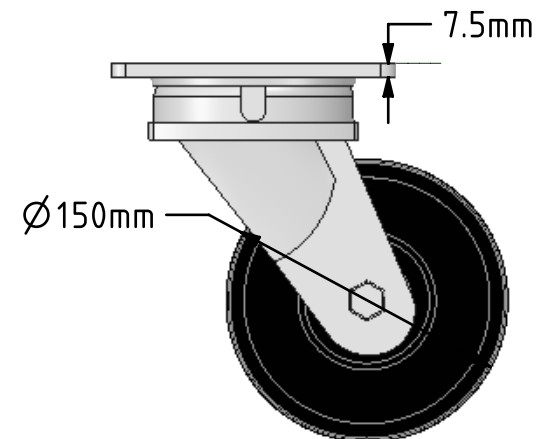
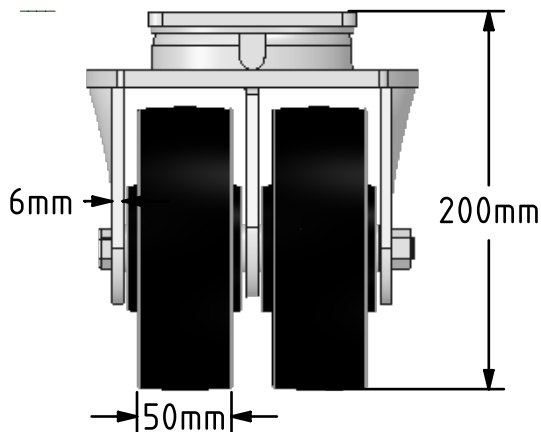
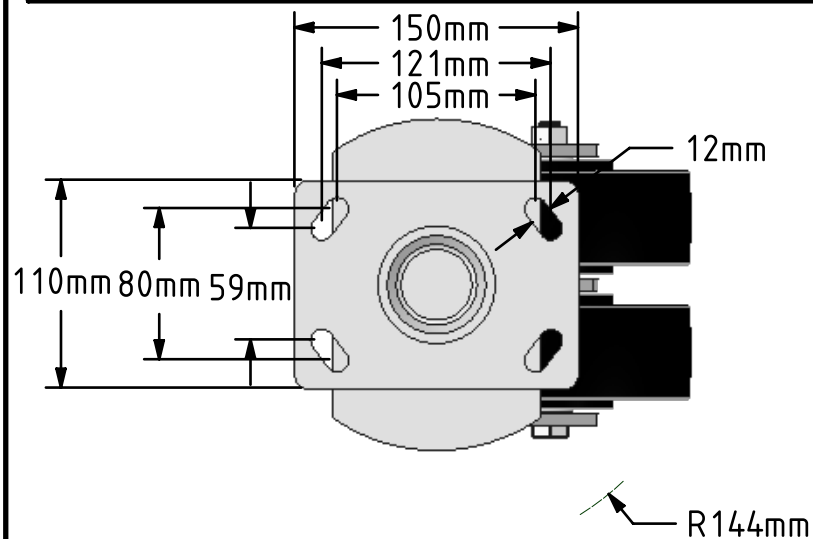


DRAWING DISCLAIMER
 COPYRIGHT OF THIS DRAWING IS RESERVED BY BIL GROUP LTD. IT IS ISSUED ON CONDITION THAT IT IS NOT REPRODUCED, COPIED, OR DISCLOSED TO A THIRD PARTY EITHER WHOLLY OR IN PART WITHOUT THE CONSENT IN WRITING OF BIL GROUP LTD.



Description:
 2BZK150CIBJ

Twin wheeled fabricated swivel castor with a top plate fixing fitted with 2 solid cast iron wheels with ball journal bearings. Wheel diameter 2 x 150mm, tread width 2 x 50mm, overall height 200mm, top plate 150mm x 110mm, hole centres 105mm x 80mm or 121mm x 59mm. Load capacity 1500kg.



	NAME	DATE
DRAWN	Matt	21/05/18
APPROVED BY	Chris	21/05/18
SCALE	1:4	21/05/18
WEIGHT	11.263kg	21/05/18

UNLESS OTHERWISE SPECIFIED DIMENSIONS ARE IN MILLIMETRES

Unspecified Tolerances
 Machining ± 0.25mm
 Fabrication ± 1mm



BIL Group Ltd, Porte Marsh Road, Calne
 Wiltshire, SN11 9BW, United Kingdom
 Tel +44 (0)1249 822 222 Fax: +44 (0)1249 822 300
 www.bilgroup.co.uk

TITLE

2BZK150CIBJ

SIZE	DWG NO.	REV
A4	BILCW032BZK150CIBJ__01	1

FILE NAME BILCW032BZK150CIBJ__01.PDF SHEET 1 OF 1