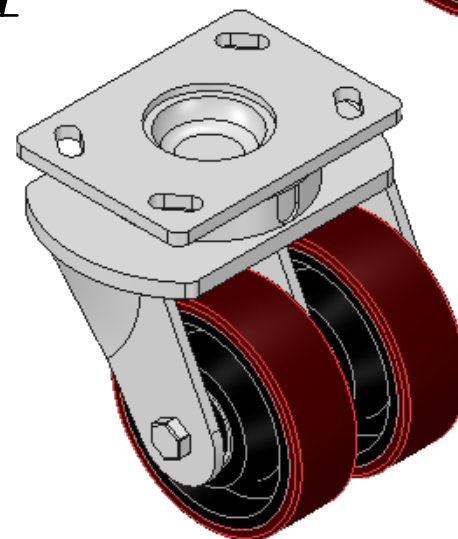
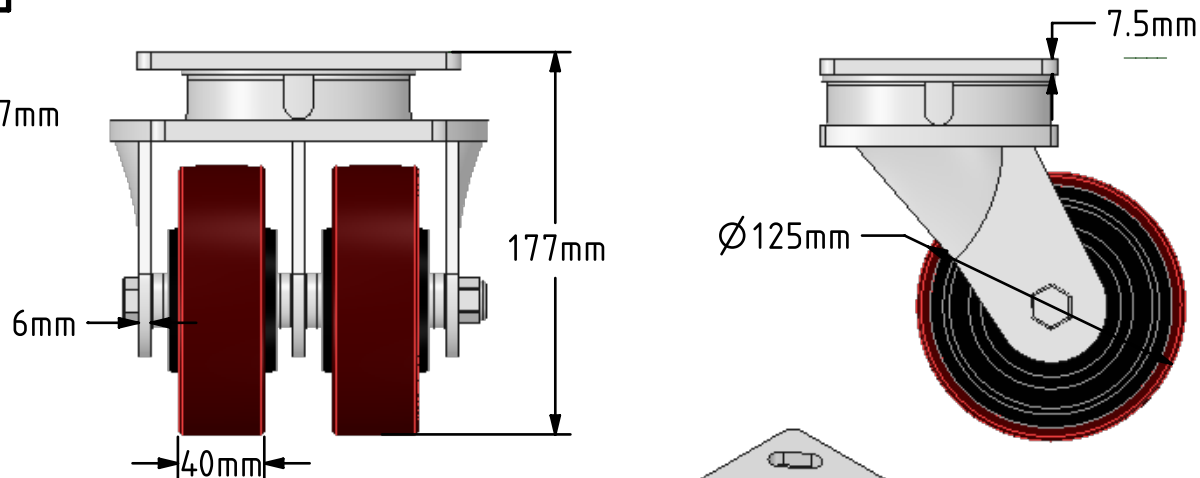
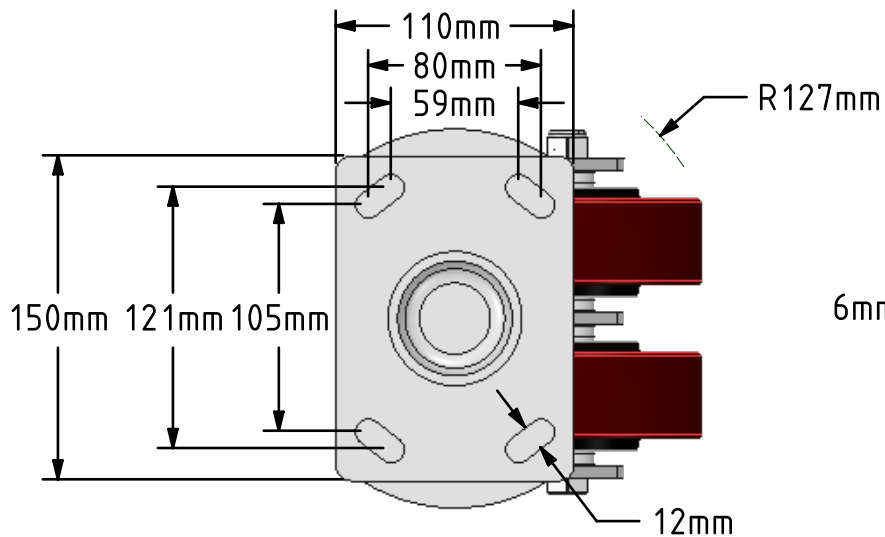
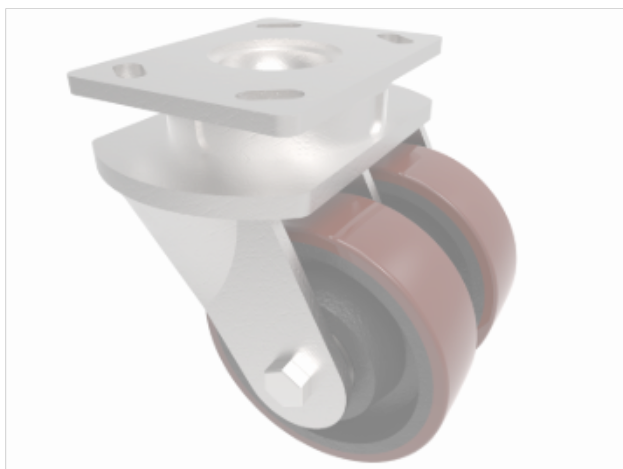



DRAWING DISCLAIMER
 COPYRIGHT OF THIS DRAWING IS RESERVED BY BIL GROUP LTD. IT IS ISSUED ON CONDITION THAT IT IS NOT REPRODUCED, COPIED, OR DISCLOSED TO A THIRD PARTY EITHER WHOLLY OR IN PART WITHOUT THE CONSENT IN WRITING OF BIL GROUP LTD.



Description:
 2BZK125PTBJ

Twin wheeled fabricated swivel castor with a top plate fixing fitted with 2 x polyurethane on cast iron centred wheels with ball bearings. Wheel diameter 2 x 125mm, tread width 2 x 40mm, overall height 177mm, top plate 150mm x 110mm, hole centres 105mm x 80mm or 121mm x 59mm. Load capacity 800kg.



	NAME	DATE	BIL Group Ltd, Porte Marsh Road, Calne Wiltshire, SN11 9BW, United Kingdom Tel +44 (0)1249 822 222 Fax: +44 (0)1249 822 300 www.bilgroup.co.uk	
DRAWN	Matt	26/07/18	 TITLE 2BZK125PTBJ	
APPROVED BY	Tim W	26/07/18		
SCALE	2:7	26/07/18		
WEIGHT	8.276kg	26/07/18		
UNLESS OTHERWISE SPECIFIED DIMENSIONS ARE IN MILLIMETRES			SIZE	DWG NO.
Unspecified Tolerances Machining ± 0.25mm Fabrication ± 1mm			A4	BILCW032BZK125PTBJ_01
			FILE NAME	BILCW032BZK125PTBJ_01.PDF
			SHEET	1 OF 1