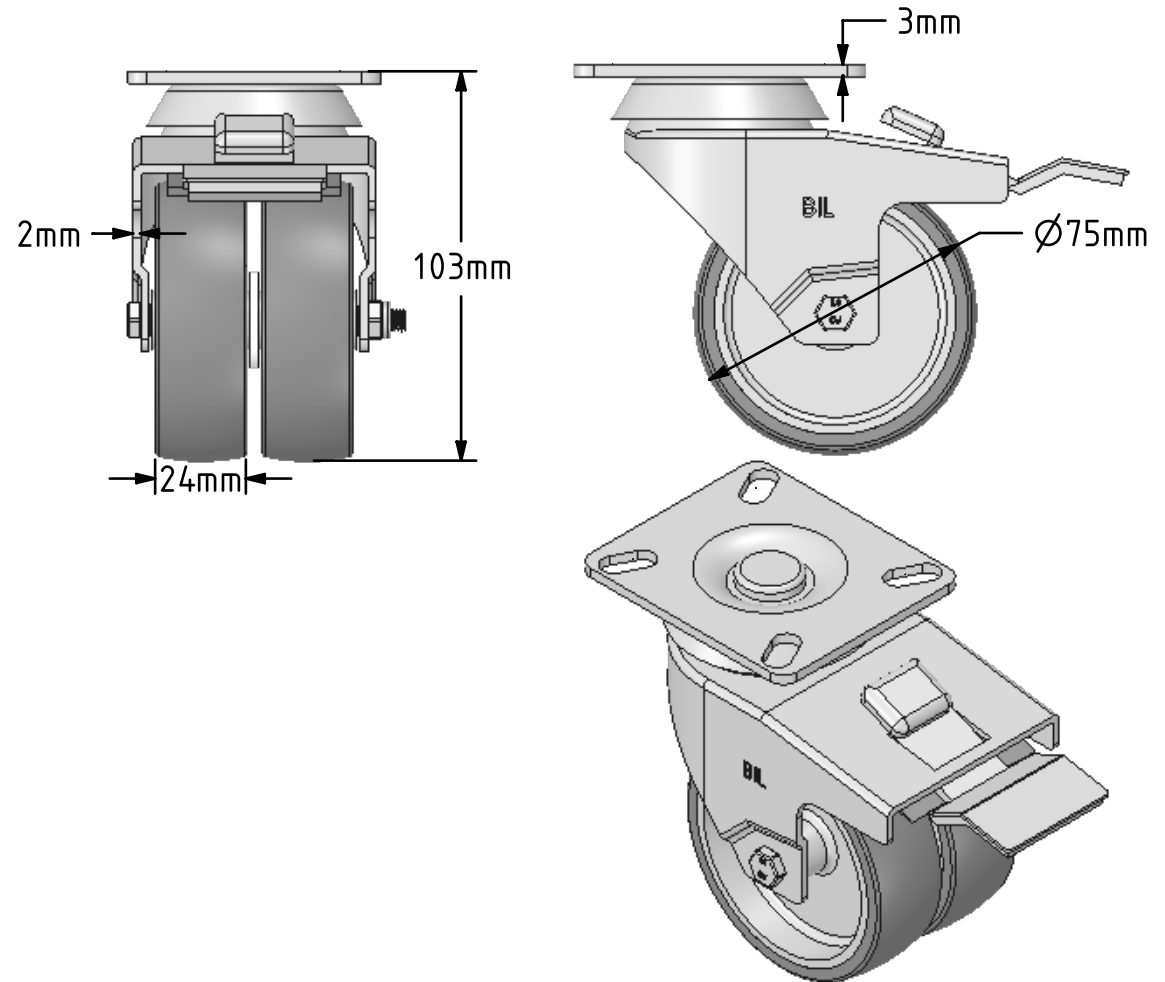
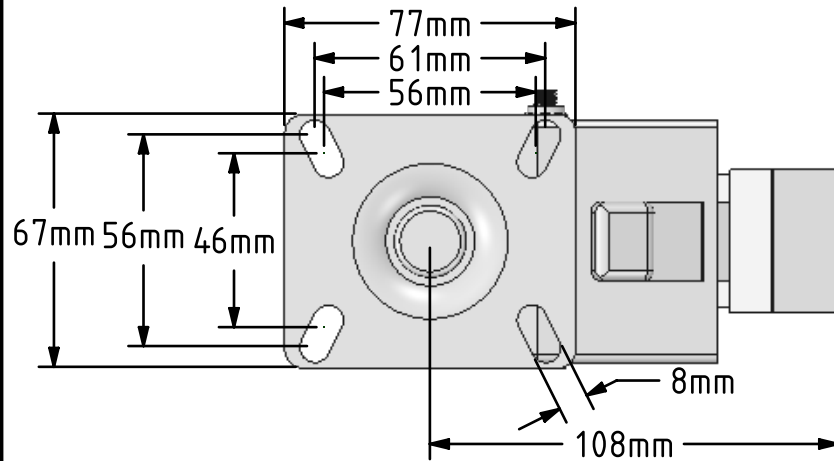


DRAWING DISCLAIMER

COPYRIGHT OF THIS DRAWING IS RESERVED BY BIL GROUP LTD. IT IS ISSUED ON CONDITION THAT IT IS NOT REPRODUCED, COPIED, OR DISCLOSED TO A THIRD PARTY EITHER WHOLLY OR IN PART WITHOUT THE CONSENT IN WRITING OF BIL GROUP LTD.

**Description:**

2BZD75VGRSWB

Twin wheeled swivel castor with a top plate fixing fitted with 2 grey thermoplastic rubber tyre on grey polypropylene wheels with plain bearings and total lock brake. Wheel diameter 75mm, tread width 2 x 24mm, overall height 103mm, plate size 77mm x 67mm, hole centres 61mm x 56mm, 56mm x 46mm. Load capacity 90kg.



	NAME	DATE
DRAWN	Matt	22/11/17
APPROVED BY	Tim W	22/11/17
SCALE	1:2	22/11/17
WEIGHT	0.653kg	22/11/17

UNLESS OTHERWISE SPECIFIED DIMENSIONS ARE IN MILLIMETRES

Unspecified Tolerances
Machining $\pm 0.25\text{mm}$
Fabrication $\pm 1\text{mm}$



BIL Group Ltd, Porte Marsh Road, Calne
Wiltshire, SN11 9BW, United Kingdom
Tel +44 (0)1249 822 222 Fax: +44 (0)1249 822 300
www.bilgroup.co.uk

TITLE

2BZD75VGRSWB

SIZE DWG NO.

A4

BILCW032BZD75VGRSWB_02

REV

2

FILE NAME BILCW032BZD75VGRSWB_02.PDF

SHEET 1 OF 1