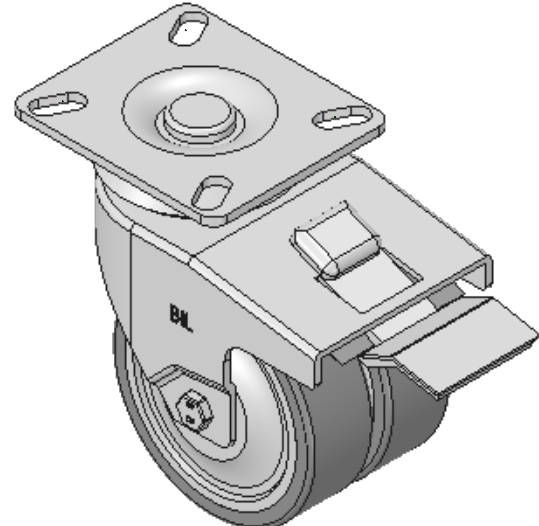
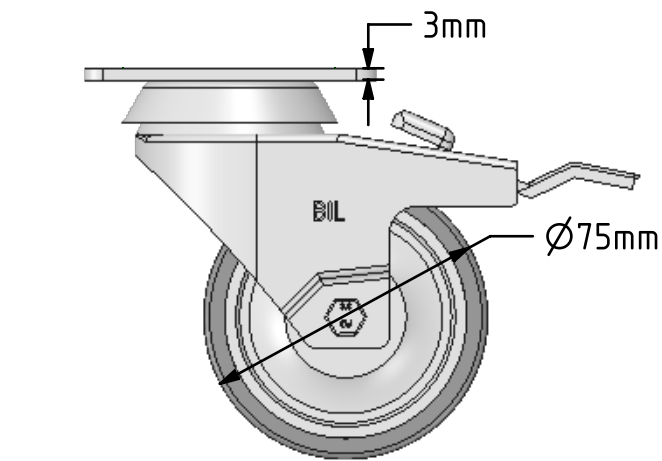
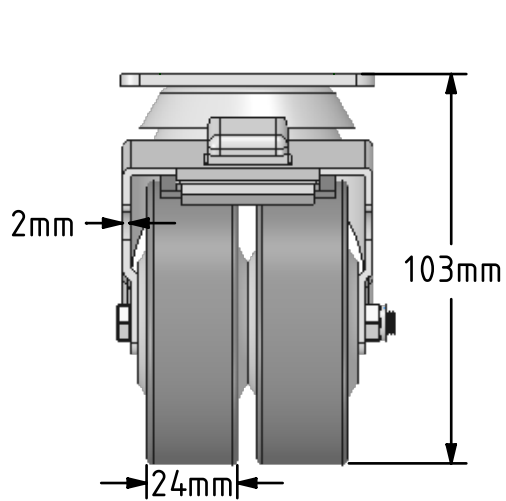
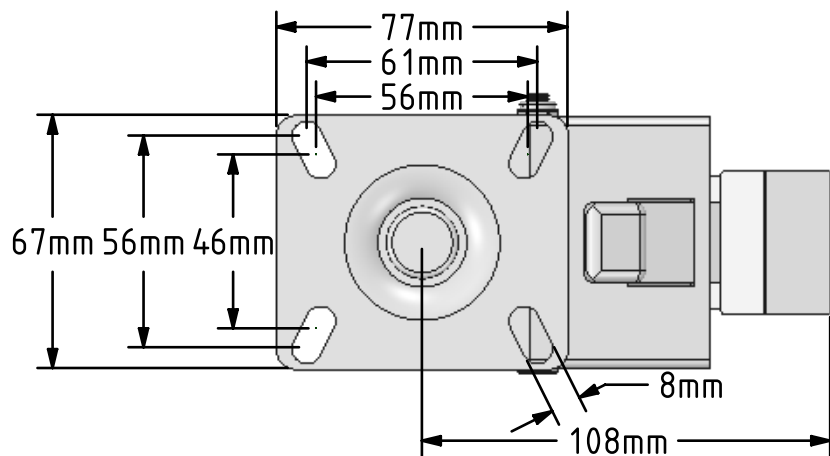


DRAWING DISCLAIMER
 COPYRIGHT OF THIS DRAWING IS RESERVED BY BIL GROUP LTD. IT IS ISSUED ON CONDITION THAT IT IS NOT REPRODUCED, COPIED, OR DISCLOSED TO A THIRD PARTY EITHER WHOLLY OR IN PART WITHOUT THE CONSENT IN WRITING OF BIL GROUP LTD.



Description:
 2BZD75VGRBJSWB

Twin wheeled swivel castor with a top plate fixing fitted with 2 grey thermoplastic rubber tyre on grey polypropylene wheels with ball bearings and swivel wheel brake. Wheel diameter 75mm, tread width 2 x 24mm, overall height 103mm, plate size 77mm x 67mm, hole centres 61mm x 56mm or 56mm x 46mm. Load capacity 90kg.



	NAME	DATE
DRAWN	Matt	22/11/17
APPROVED BY	Chris	22/11/17
SCALE	1:2	22/11/17
WEIGHT	0.717kg	22/11/17

UNLESS OTHERWISE SPECIFIED DIMENSIONS ARE IN MILLIMETRES
 Unspecified Tolerances
 Machining ± 0.25mm
 Fabrication ± 1mm

 BIL Group Ltd, Porte Marsh Road, Calne Wiltshire, SN11 9BW, United Kingdom
 Tel +44 (0)1249 822 222 Fax: +44 (0)1249 822 300
 www.bilgroup.co.uk

TITLE
2BZD75VGRBJSWB

SIZE	DWG NO.	REV
A4	BILCW032BZD75VGRBJSWB_01	1

FILE NAME BILCW032BZD75VGRBJSWB_01.PDF SHEET 1 OF 1