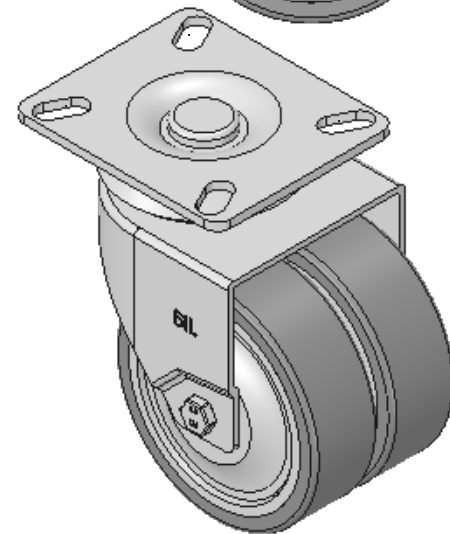
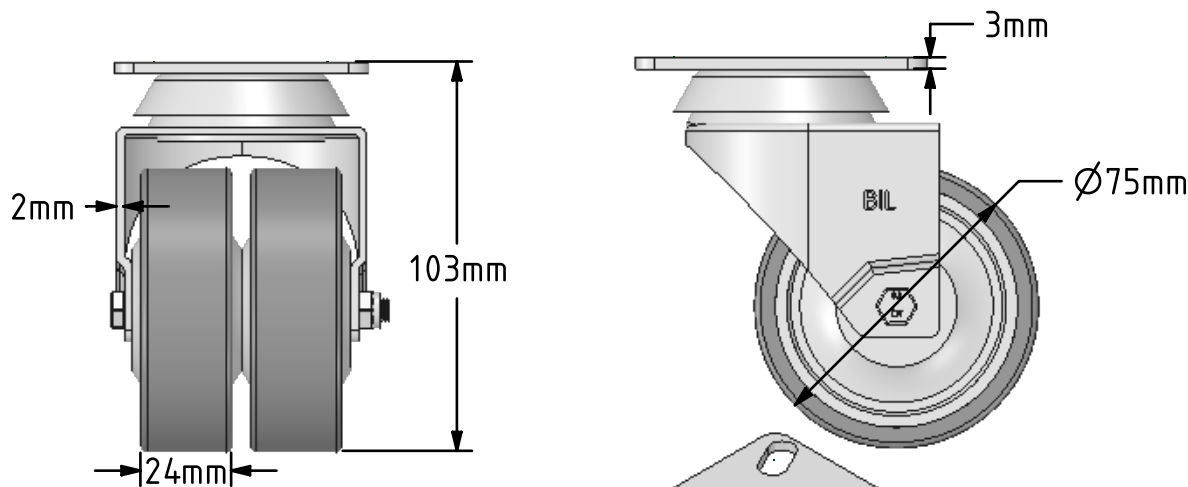
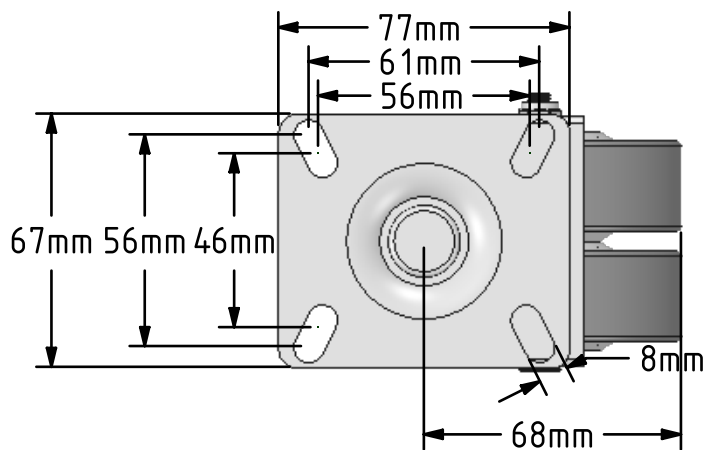



DRAWING DISCLAIMER  
 COPYRIGHT OF THIS DRAWING IS RESERVED BY BIL GROUP LTD. IT IS ISSUED ON CONDITION THAT IT IS NOT REPRODUCED, COPIED, OR DISCLOSED TO A THIRD PARTY EITHER WHOLLY OR IN PART WITHOUT THE CONSENT IN WRITING OF BIL GROUP LTD.



Description:  
 2BZD75VGRBJ

Twin wheeled swivel castor with a top plate fixing fitted with 2 grey thermoplastic rubber tyre on grey polypropylene wheels with ball bearings. Wheel diameter 75mm, tread width 2 x 24mm, overall height 103mm, plate size 77mm x 67mm, hole centres 61mm x 56mm or 56mm x 46mm. Load capacity 90kg.



	NAME	DATE	 BIL Group Ltd, Porte Marsh Road, Calne Wiltshire, SN11 9BW, United Kingdom Tel +44 (0)1249 822 222 Fax: +44 (0)1249 822 300 www.bilgroup.co.uk	
DRAWN	Matt	22/11/17		
APPROVED BY		22/11/17	TITLE 2BZD75VGRBJ	
SCALE	1:2	22/11/17		
WEIGHT	0.607kg	22/11/17	SIZE DWG NO. A4 BILCW032BZD75VGRBJ_01 REV 1	
UNLESS OTHERWISE SPECIFIED DIMENSIONS ARE IN MILLIMETRES Unspecified Tolerances Machining ± 0.25mm Fabrication ± 1mm				