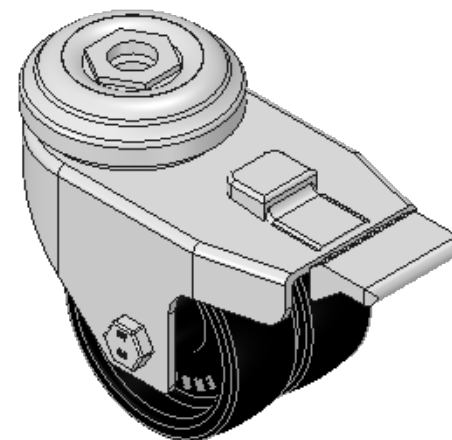
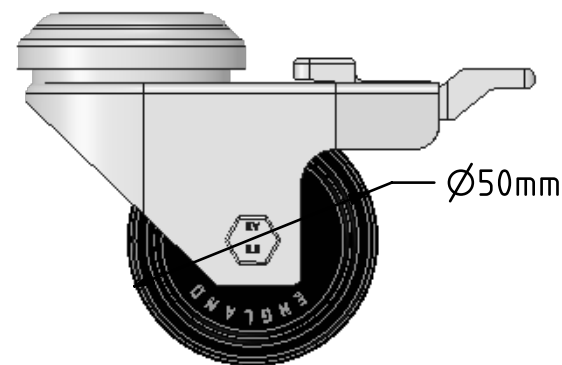
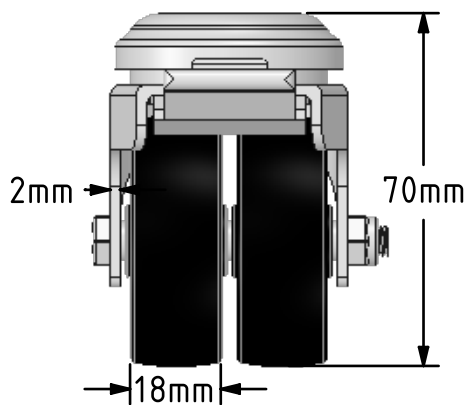
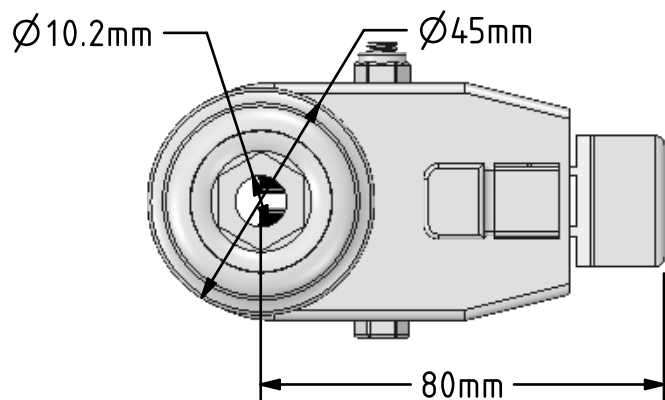


DRAWING DISCLAIMER
 COPYRIGHT OF THIS DRAWING IS RESERVED BY BIL GROUP LTD. IT IS ISSUED ON CONDITION THAT IT IS NOT REPRODUCED, COPIED, OR DISCLOSED TO A THIRD PARTY EITHER WHOLLY OR IN PART WITHOUT THE CONSENT IN WRITING OF BIL GROUP LTD.



Description:
 2BZD50PLBH10SWB

Pressed steel twin wheel swivel castor with a 10mm bolt hole fixing fitted with 2 black polypropylene wheels with a plain bearing and swivel wheel brake. Wheel diameter 50mm, tread width 18mm x 2, overall height 70mm. Load capacity 60kg.



	NAME	DATE
DRAWN	Matt	23/11/17
APPROVED BY	Tim W	23/11/17
SCALE	2:3	23/11/17
WEIGHT	0.252kg	23/11/17

UNLESS OTHERWISE SPECIFIED DIMENSIONS ARE IN MILLIMETRES

Unspecified Tolerances
 Machining $\pm 0.25\text{mm}$
 Fabrication $\pm 1\text{mm}$



BIL Group Ltd, Porte Marsh Road, Calne
 Wiltshire, SN11 9BW, United Kingdom
 Tel +44 (0)1249 822 222 Fax: +44 (0)1249 822 300
 www.bilgroup.co.uk

TITLE

2BZD50PLBH10SWB

SIZE DWG NO.

A4

BILCW032BZD50PLBH10SWB_01

REV

1

FILE NAME BILCW032BZD50PLBH10SWB_01.PDF SHEET 1 OF 1