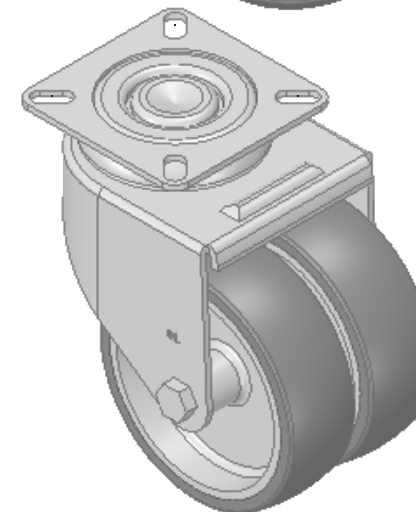
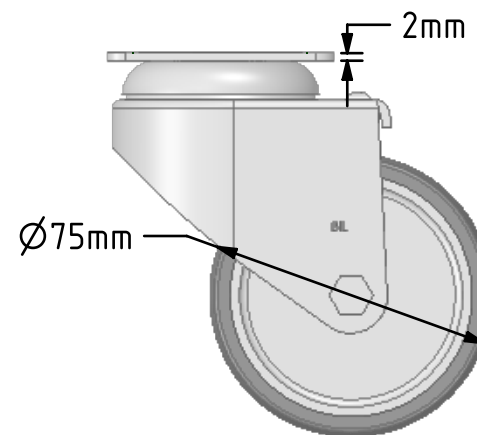
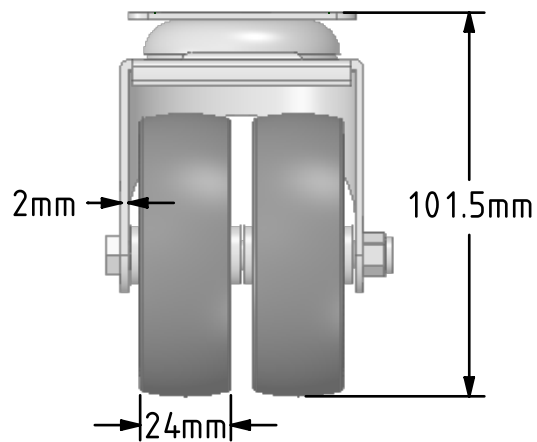
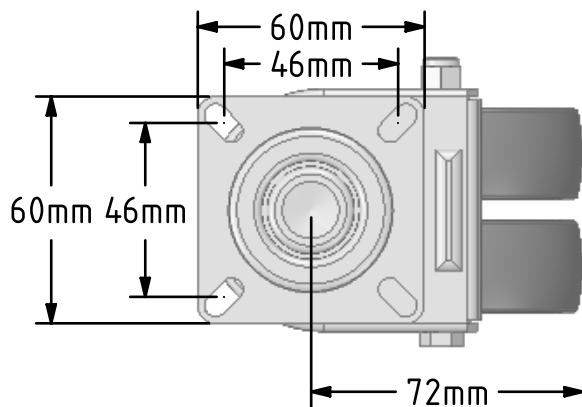


DRAWING DISCLAIMER  
 COPYRIGHT OF THIS DRAWING IS RESERVED BY BIL GROUP LTD. IT IS ISSUED ON CONDITION THAT IT IS NOT REPRODUCED, COPIED, OR DISCLOSED TO A THIRD PARTY EITHER WHOLLY OR IN PART WITHOUT THE CONSENT IN WRITING OF BIL GROUP LTD.



Description:  
 2BZA75VGR

Twin wheeled pressed steel swivel castor with a top plate fixing fitted with 2 thermoplastic grey rubber tyres on grey polypropylene centred wheels with plain bearings. Wheel diameter 75mm, tread width 2 x 24mm, overall height 101mm, plate size 60mm x 60mm, hole centres 46mm x 46mm Load capacity 80kg.



	NAME	DATE
DRAWN	Matt	06/11/18
APPROVED BY	Tim W	06/11/18
SCALE	1:2	06/11/18
WEIGHT	0.427kg	06/11/18



BIL Group Ltd, Porte Marsh Road, Calne  
 Wiltshire, SN11 9BW, United Kingdom  
 Tel +44 (0)1249 822 222 Fax: +44 (0)1249 822 300  
 www.bilgroup.co.uk

TITLE

2BZA75VGR

UNLESS OTHERWISE SPECIFIED DIMENSIONS ARE IN MILLIMETRES

Unspecified Tolerances  
 Machining ± 0.25mm  
 Fabrication ± 1mm

SIZE	DWG NO.	REV
A4	BILCW032BZA75VGR_02	2
FILE NAME	BILCW032BZA75VGR_02.PDF	SHEET 1 OF 1