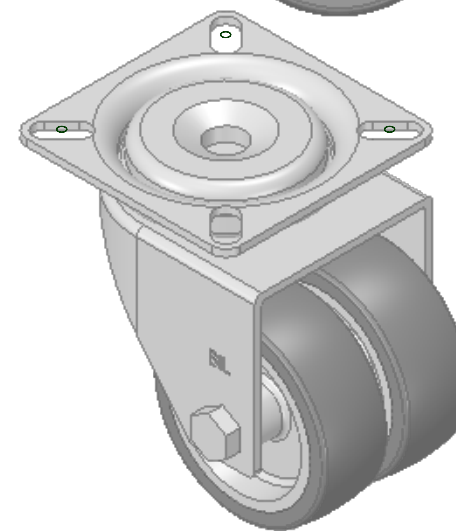
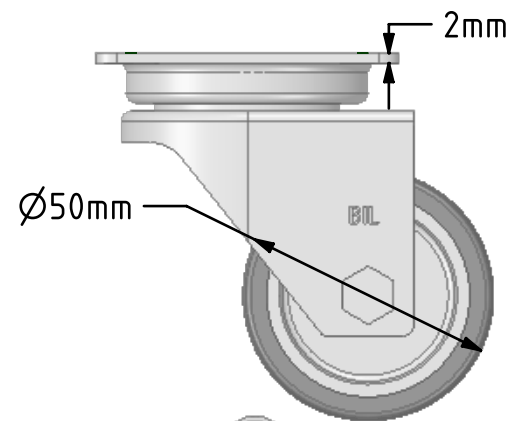
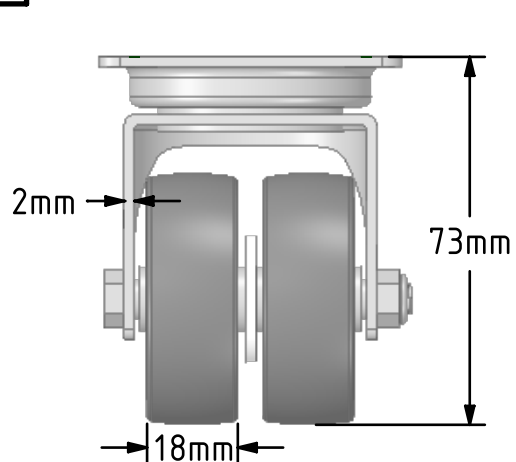
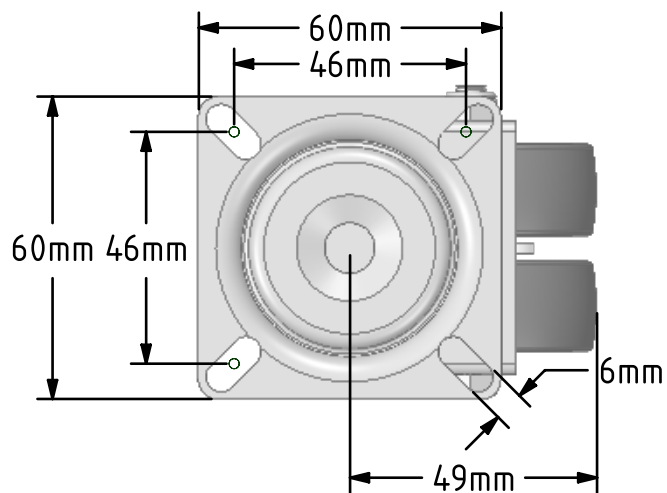


DRAWING DISCLAIMER
 COPYRIGHT OF THIS DRAWING IS RESERVED BY BIL GROUP LTD. IT IS ISSUED ON CONDITION THAT IT IS NOT REPRODUCED, COPIED, OR DISCLOSED TO A THIRD PARTY EITHER WHOLLY OR IN PART WITHOUT THE CONSENT IN WRITING OF BIL GROUP LTD.



Description:
 2BZA50VGR

Twin wheeled pressed steel swivel castor with a top plate fixing fitted with 2 thermoplastic grey rubber tyres on grey polypropylene centred wheels with plain bearings. Wheel diameter 50mm, tread width 2 x 18mm, overall height 73mm, plate size 60mm x 60mm, hole centres 46mm x 46mm. Load capacity 60kg.



| | NAME | DATE |
|-------------|---------|----------|
| DRAWN | Matt | 14/08/18 |
| APPROVED BY | Tim W | 14/08/18 |
| SCALE | 2:3 | 14/08/18 |
| WEIGHT | 0.249kg | 14/08/18 |

 BIL Group Ltd, Porte Marsh Road, Calne
 Wiltshire, SN11 9BW, United Kingdom
 Tel +44 (0)1249 822 222 Fax: +44 (0)1249 822 300
 www.bilgroup.co.uk

| TITLE | |
|-----------|--|
| 2BZA50VGR | |

| | | | | |
|---|--|-------------------------|---------------------|--------------|
| UNLESS OTHERWISE SPECIFIED DIMENSIONS ARE IN MILLIMETRES | | SIZE | DWG NO. | REV |
| Unspecified Tolerances Machining ± 0.25mm Fabrication ± 1mm | | A4 | BILCW032BZA50VGR_01 | 1 |
| FILE NAME | | BILCW032BZA50VGR_01.PDF | | SHEET 1 OF 1 |