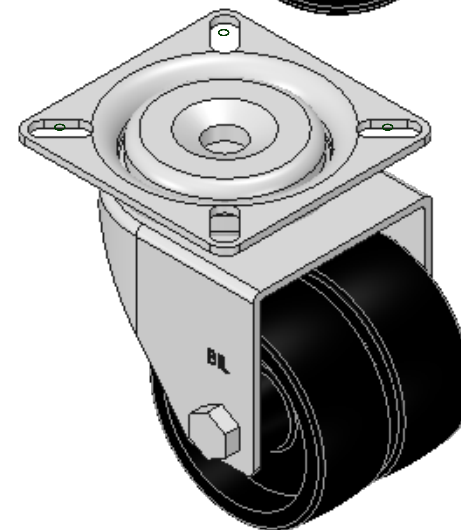
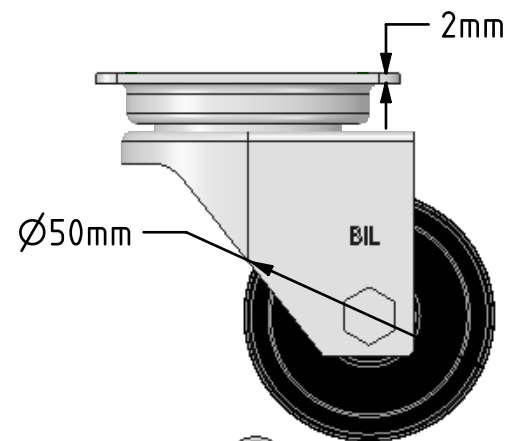
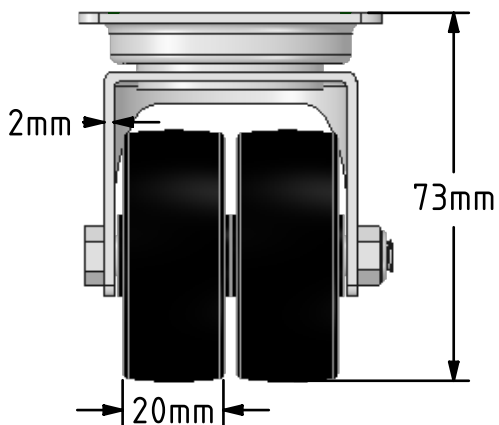
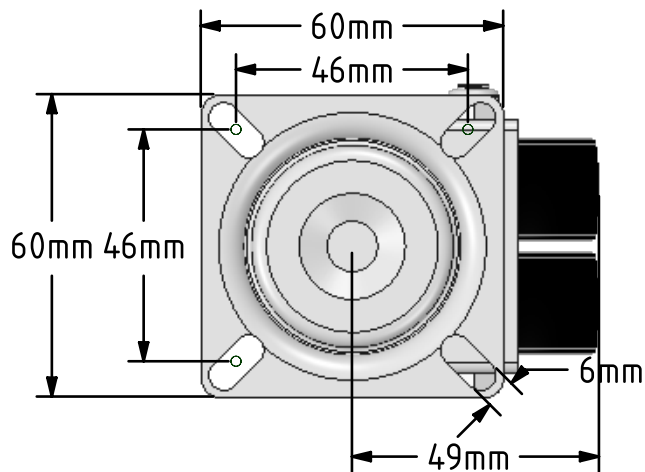



DRAWING DISCLAIMER
 COPYRIGHT OF THIS DRAWING IS RESERVED BY BIL GROUP LTD. IT IS ISSUED ON CONDITION THAT IT IS NOT REPRODUCED, COPIED, OR DISCLOSED TO A THIRD PARTY EITHER WHOLLY OR IN PART WITHOUT THE CONSENT IN WRITING OF BIL GROUP LTD.



Description:
 2BZA50PL

Twin wheeled pressed steel swivel castor with a top plate fixing fitted with 2 black polypropylene wheels with plain bearings. Wheel diameter 50mm, tread width 2 x 20mm, overall height 73mm, plate size 60mm x 60mm, hole centres 46mm x 46mm Load capacity 60kg.



	NAME	DATE	BIL Group Ltd, Porte Marsh Road, Calne Wiltshire, SN11 9BW, United Kingdom Tel +44 (0)1249 822 222 Fax: +44 (0)1249 822 300 www.bilgroup.co.uk	
DRAWN	Matt	12/07/18	 TITLE 2BZA50PL	
APPROVED BY	Tim W	12/07/18		
SCALE	2:3	12/07/18		
WEIGHT	0.252kg	12/07/18		
UNLESS OTHERWISE SPECIFIED DIMENSIONS ARE IN MILLIMETRES			SIZE	DWG NO.
Unspecified Tolerances Machining ± 0.25mm Fabrication ± 1mm			A4	BILCW032BZA50PL__01
			REV	1
			FILE NAME	BILCW032BZA50PL__01.PDF SHEET 1 OF 1