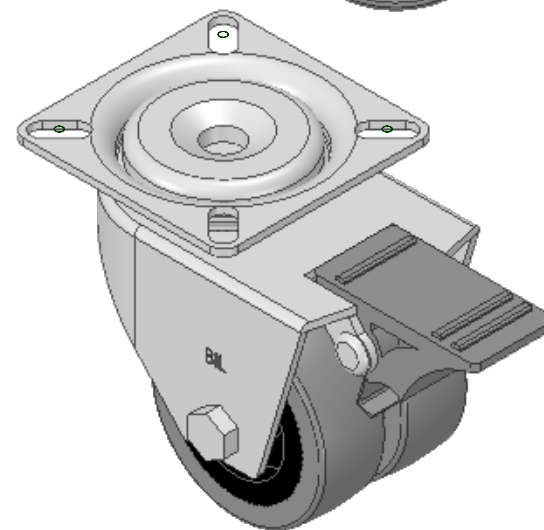
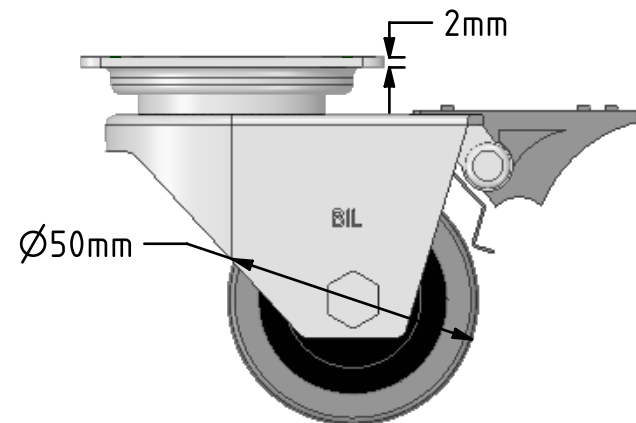
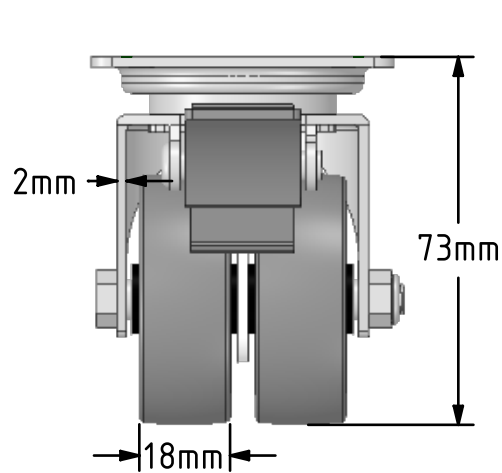
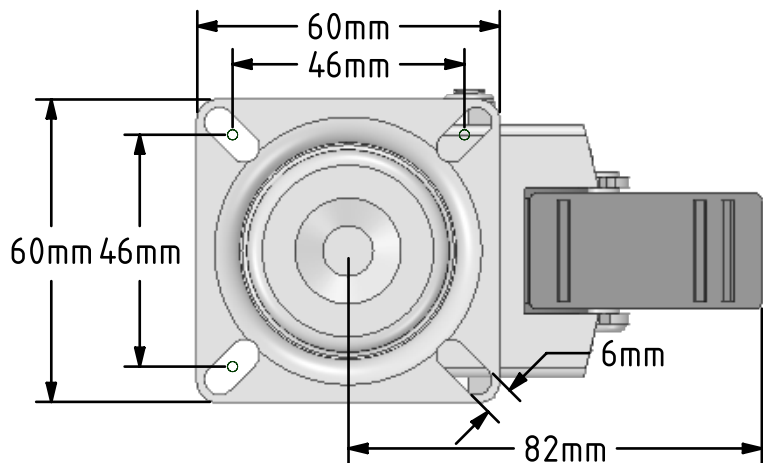


DRAWING DISCLAIMER
 COPYRIGHT OF THIS DRAWING IS RESERVED BY BIL GROUP LTD. IT IS ISSUED ON CONDITION THAT IT IS NOT REPRODUCED, COPIED, OR DISCLOSED TO A THIRD PARTY EITHER WHOLLY OR IN PART WITHOUT THE CONSENT IN WRITING OF BIL GROUP LTD.



Description:
 2BZA50GRSWB

Twin wheeled pressed steel swivel castor with a top plate fixing fitted with 2 grey rubber tyres on black polypropylene centred wheels with plain bearings with a total lock brake. Wheel diameter 50mm, tread width 2 x 18mm, overall height 73mm, plate size 60mm x 60mm, hole centres 46mm x 46mm Load capacity 60kg.



	NAME	DATE
DRAWN	Matt	05/02/19
APPROVED BY	Tim W	05/02/19
SCALE	2:3	05/02/19
WEIGHT	0.359kg	05/02/19

UNLESS OTHERWISE SPECIFIED DIMENSIONS ARE IN MILLIMETRES

Unspecified Tolerances
 Machining ± 0.25mm
 Fabrication ± 1mm



BIL Group Ltd, Porte Marsh Road, Calne
 Wiltshire, SN11 9BW, United Kingdom
 Tel +44 (0)1249 822 222 Fax: +44 (0)1249 822 300
 www.bilgroup.co.uk

TITLE

2BZA50GRSWB

SIZE	DWG NO.	REV
A4	BILCW032BZA50GRSWB_01	1

FILE NAME BILCW032BZA50GRSWB_01.PDF SHEET 1 OF 1