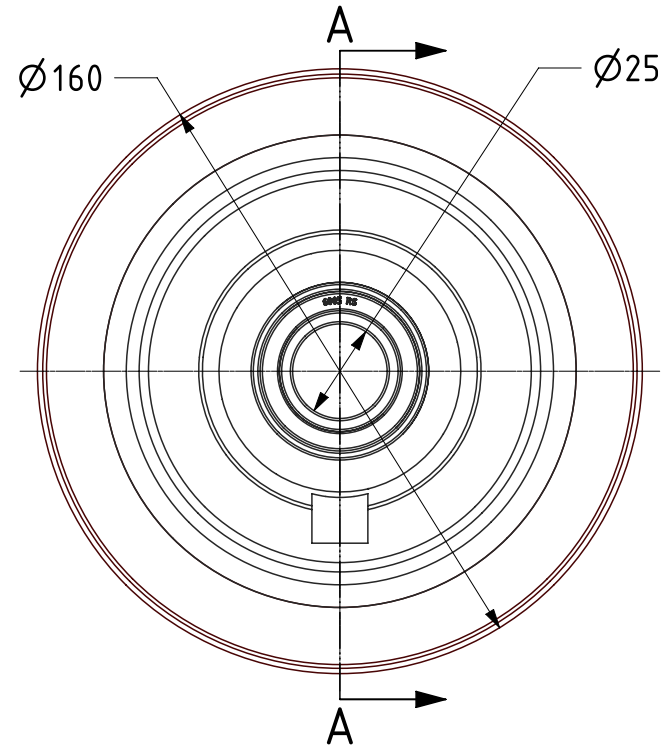
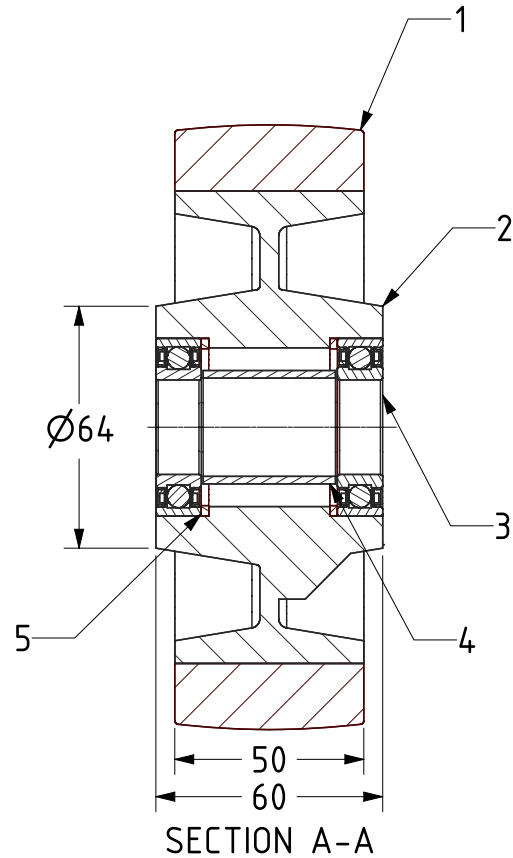



ITEM NO.	PART NUMBER	QTY
1	94 SHORE A POLYURETHANE TYRE	1
2	CAST IRON RIM	1
3	BEARING6005	2
4	BSM25XM35	1
5	BEARINGSPACER47X2	2



UNLESS OTHERWISE SPECIFIED DIMENSIONS ARE IN MILLIMETRES Unspecified Tolerances Machining $\pm 0.25\text{mm}$ Fabrication $\pm 1\text{mm}$	DRAWING DISCLAIMER COPYRIGHT OF THIS DRAWING IS RESERVED BY BIL GROUP LTD. IT IS ISSUED ON CONDITION THAT IT IS NOT REPRODUCED, COPIED, OR DISCLOSED TO A THIRD PARTY EITHER WHOLLY OR IN PART WITHOUT THE CONSENT IN WRITING OF BIL GROUP LTD.		NAME	DATE	 BIL Group Ltd, Porte Marsh Road, Calne Wiltshire, SN11 9BW, United Kingdom Tel +44 (0)1249 822 222 Fax: +44 (0)1249 822 300 www.bilgroup.co.uk	REV 1
		DRAWN	Matt	29/11/22		
		APPROVED BY	Kevin	29/11/22		
		SCALE	1:2		DWG NO.	BZXH160WPTBJM25
		WEIGHT	2.74kg		BZXH160WPTBJM25 SHEET 1 OF 1	