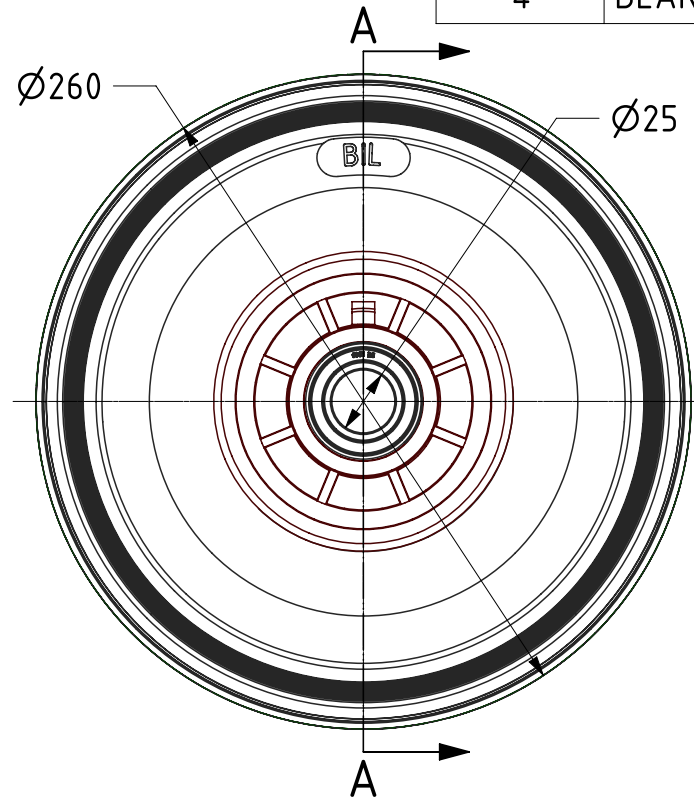
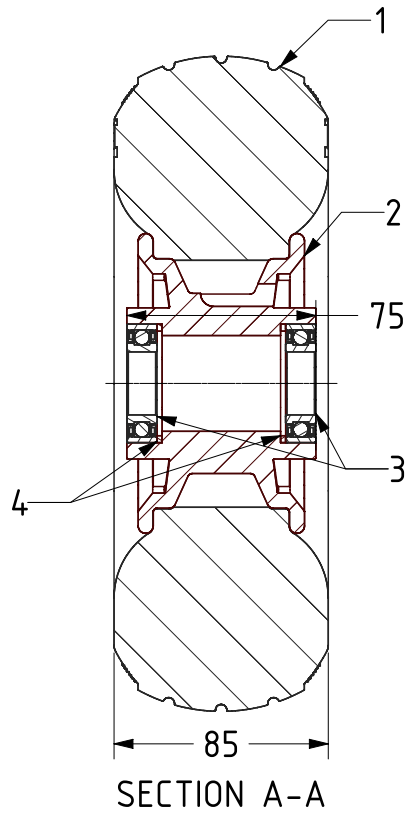





| ITEM NO. | PART NUMBER          | QTY |
|----------|----------------------|-----|
| 1        | TYRE260PUR           | 1   |
| 2        | RIM300X4PLRED6204X75 | 1   |
| 3        | BEARING6005          | 2   |
| 4        | BEARINGSPACER47X2    | 2   |



|   |  |             |         |              |   |
|---|--|-------------|---------|--------------|---|
| UNLESS OTHERWISE SPECIFIED DIMENSIONS ARE IN MILLIMETRES<br><br>Unspecified Tolerances<br>Machining ± 0.25mm<br>Fabrication ± 1mm | DRAWING DISCLAIMER<br><br>COPYRIGHT OF THIS DRAWING IS RESERVED BY BIL GROUP LTD. IT IS ISSUED ON CONDITION THAT IT IS NOT REPRODUCED, COPIED, OR DISCLOSED TO A THIRD PARTY EITHER WHOLLY OR IN PART WITHOUT THE CONSENT IN WRITING OF BIL GROUP LTD. |             | NAME    | DATE         |  BIL Group Ltd, Porte Marsh Road, Calne<br>Wiltshire, SN11 9BW, United Kingdom<br>Tel +44 (0)1249 822 222 Fax: +44 (0)1249 822 300<br>www.bilgroup.co.uk |
|   |  | DRAWN       | Matt    | 07/10/22     |   |
|   |  | APPROVED BY | Kevin   | 07/10/22     |   |
|   |  | SCALE       | 1:3     |              |   |
|   |  | WEIGHT      | 1.879kg |              |   |
| DWG NO. BZWPPUB26025  |  |             |         | REV 1        |   |
| BZWPPUB26025  |  |             |         | SHEET 1 OF 1 |   |