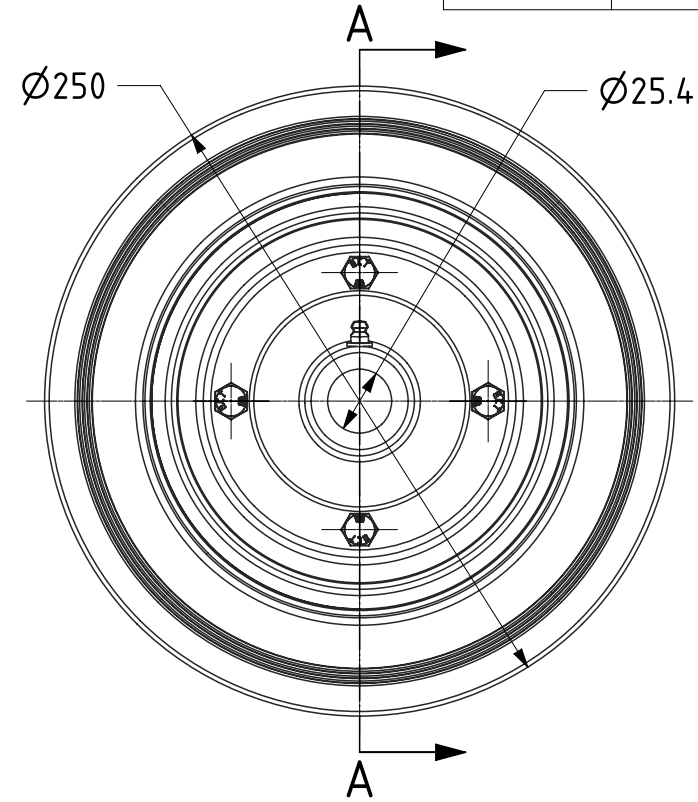
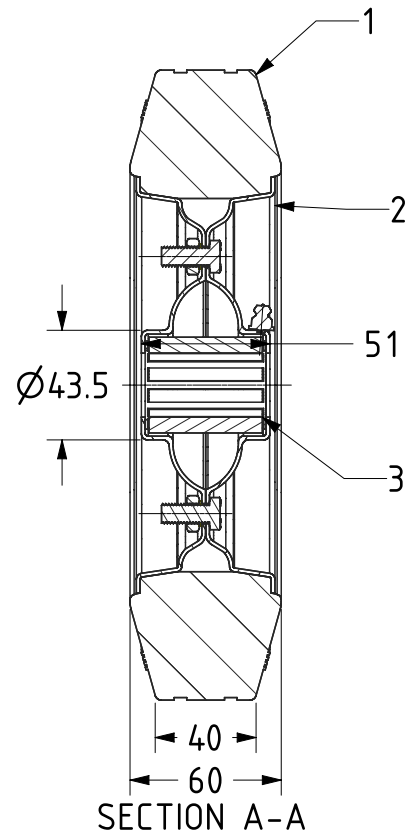




| ITEM NO. | PART NUMBER | QTY |
|----------|----------------|-----|
| 1 | RUBBER TYRE | 1 |
| 2 | STEEL RIM | 1 |
| 3 | ROLLER BEARING | 1 |



UNLESS OTHERWISE SPECIFIED DIMENSIONS ARE IN MILLIMETRES

Unspecified Tolerances
Machining $\pm 0.25\text{mm}$
Fabrication $\pm 1\text{mm}$

DRAWING DISCLAIMER

COPYRIGHT OF THIS DRAWING IS RESERVED BY BIL GROUP LTD. IT IS ISSUED ON CONDITION THAT IT IS NOT REPRODUCED, COPIED, OR DISCLOSED TO A THIRD PARTY EITHER WHOLLY OR IN PART WITHOUT THE CONSENT IN WRITING OF BIL GROUP LTD.

| | NAME | DATE |
|-------------|---------|----------|
| DRAWN | Matt | 26/11/21 |
| APPROVED BY | Kevin | 26/11/21 |
| SCALE | 1:3 | |
| WEIGHT | 2.893kg | |

| | | | | |
|---|----------------|----------------|--------------|---|
|  <p>BIL Group Ltd, Porte Marsh Road, Calne Wiltshire, SN11 9BW, United Kingdom Tel +44 (0)1249 822 222 Fax: +44 (0)1249 822 300 www.bilgroup.co.uk</p> | DWG NO. | BZWMKR25025451 | REV | 1 |
| | BZWMKR25025451 | | SHEET 1 OF 1 | |