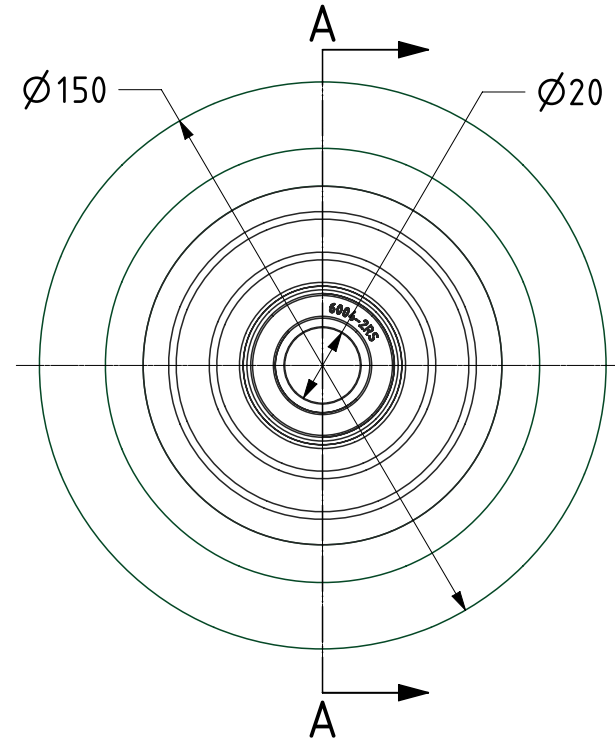
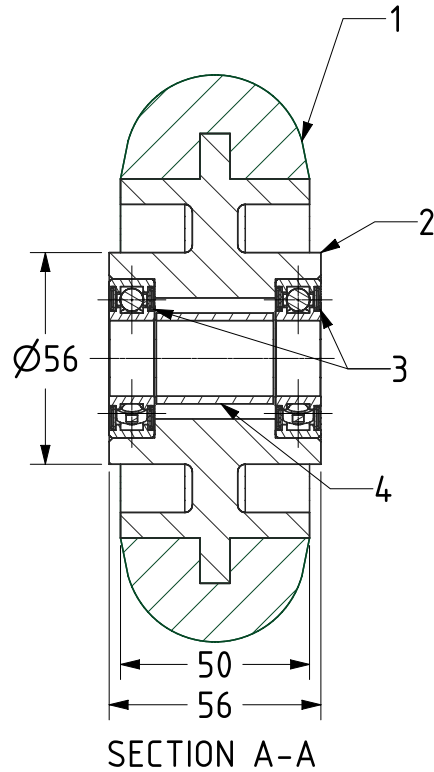




ITEM NO.	PART NUMBER	QTY
1	ERGONOMIC POLYURETHANE TYRE	1
2	ALUMINIUM RIM	1
3	BEARING6004	2
4	BEARING SPACER	1



UNLESS OTHERWISE SPECIFIED DIMENSIONS ARE IN MILLIMETRES

Unspecified Tolerances
Machining $\pm 0.25\text{mm}$
Fabrication $\pm 1\text{mm}$

DRAWING DISCLAIMER

COPYRIGHT OF THIS DRAWING IS RESERVED BY BIL GROUP LTD. IT IS ISSUED ON CONDITION THAT IT IS NOT REPRODUCED, COPIED, OR DISCLOSED TO A THIRD PARTY EITHER WHOLLY OR IN PART WITHOUT THE CONSENT IN WRITING OF BIL GROUP LTD.

	NAME	DATE
DRAWN	Matt	23/03/22
APPROVED BY	Kevin	23/03/22
SCALE	1:2	
WEIGHT	1.404kg	

	BIL Group Ltd, Porte Marsh Road, Calne Wiltshire, SN11 9BW, United Kingdom Tel +44 (0)1249 822 222 Fax: +44 (0)1249 822 300 www.bilgroup.co.uk	
	DWG NO. BZH150WSRPTABJM20	REV 1
BZH150WSRPTABJM20 SHEET 1 OF 1		