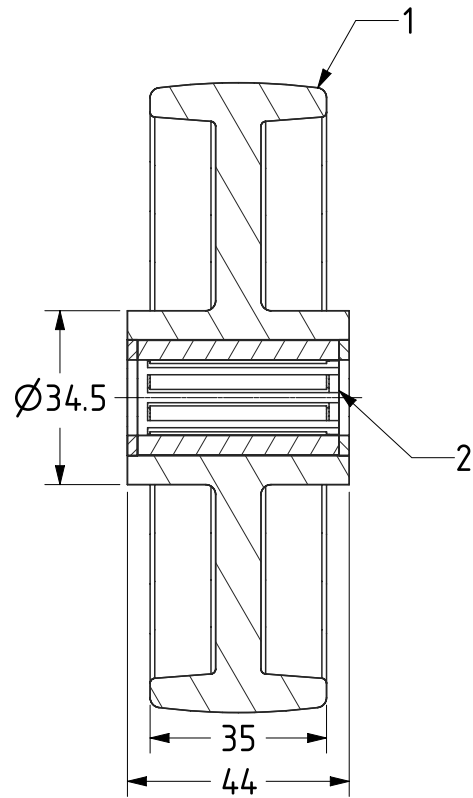
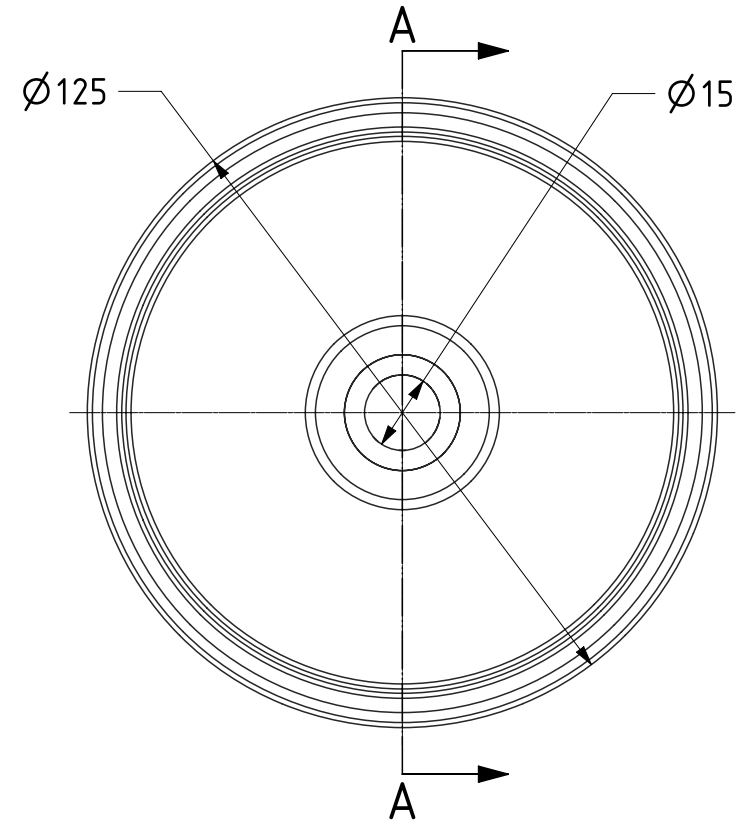





| ITEM NO. | PART NUMBER | QTY |
|----------|----------------|-----|
| 1 | NYLON WHEEL | 1 |
| 2 | ROLLER BEARING | 1 |



SECTION A-A



| | | | | | |
|---|--|-------------|-------------|----------|---|
| UNLESS OTHERWISE SPECIFIED DIMENSIONS ARE IN MILLIMETRES Unspecified Tolerances Machining ± 0.25mm Fabrication ± 1mm | DRAWING DISCLAIMER COPYRIGHT OF THIS DRAWING IS RESERVED BY BIL GROUP LTD. IT IS ISSUED ON CONDITION THAT IT IS NOT REPRODUCED, COPIED, OR DISCLOSED TO A THIRD PARTY EITHER WHOLLY OR IN PART WITHOUT THE CONSENT IN WRITING OF BIL GROUP LTD. | | NAME | DATE |  BIL Group Ltd, Porte Marsh Road, Calne Wiltshire, SN11 9BW, United Kingdom Tel +44 (0)1249 822 222 Fax: +44 (0)1249 822 300 www.bilgroup.co.uk |
| | | DRAWN | Matt | 15/10/21 | |
| | | APPROVED BY | Chris | 18/10/21 | |
| | | SCALE | 2:3 | | |
| | | WEIGHT | 0.220kg | | |
| | | DWG NO. | BZH125WNYRB | | REV 1 |
| | | BZH125WNYRB | | | SHEET 1 OF 1 |