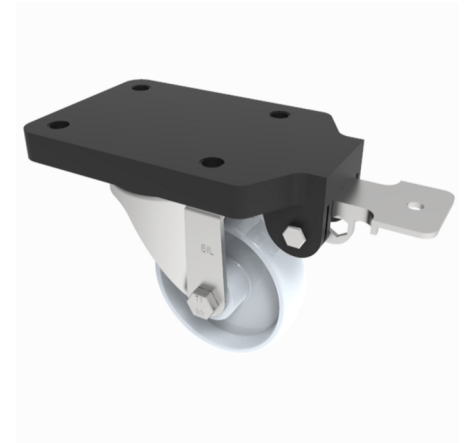


White Nylon Swivel Brake Plate Castor 80mm 200kg

Product code: BZE80NYBJFPSWB

Pressed steel swivel castor with a top plate fixing fitted with a white nylon wheel with a ball bearings and retaining cap/thread guard and a fixed position total lock brake. Wheel diameter 80mm, tread width 32mm, overall height 125mm, plate size 180mm x 115mm, hole centres 105mm x 80mm. Load capacity 200kg.



Fixing Option	Plate
Diameter (mm)	80
Load Capacity (kg)	200
Castor Type	Swivel with Fixed Position Total Lock Brake
Height (mm)	125
Wheel Material	Nylon
Colour / Shore Hardness	White Nylon
Bearing Type	Ball
Tread (mm)	32
Fork Thickness (mm)	4
Temperature Resistance	-30 °C TO +80 °C
Plate Size (mm)	180 x 115
Hole Centres (mm)	105 x 80
Swivel Radius (mm)	164
Top Plate Thickness (mm)	18
To Suit Fixing Bolt (mm)	10

BIL GROUP LTD

Porte Marsh Road, Calne, Wiltshire, SN11 9BW

Registered in England No: 2603821

VAT Reg: GB572705729

