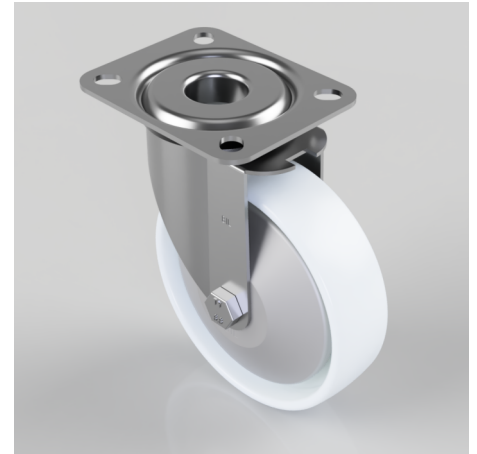


White Nylon Plate Swivel Castor 125mm 200kg Load

Product code: BZMM125NYG

Pressed steel swivel castor with a top plate fixing fitted with a white nylon wheel with a Plain Bore and thread guards. Wheel diameter 125mm, tread width 35mm, overall height 155mm, top plate 105mm x 85mm, hole centres 80mm x 60mm. Load capacity 200kg.



Diameter (mm)	125
Fixing Option	Plate
Castor Type	Swivel
Plate Size (mm)	105 X 85
Hole Centres (mm)	80 X 60
Height (mm)	155
Bearing Type	Plain
Swivel Radius (mm)	95
Wheel Material	Nylon
Colour / Shore Hardness	White Nylon
Top Plate Thickness (mm)	2.5
Fork Thickness (mm)	2
Temperature Resistance	-15 °C TO +80 °C
To Suit Fixing Bolt (mm)	10
Tread (mm)	35
Load Capacity (kg)	200

BIL GROUP LTD

Porte Marsh Road, Calne, Wiltshire, SN11 9BW

Registered in England No: 2603821

VAT Reg: GB572705729

