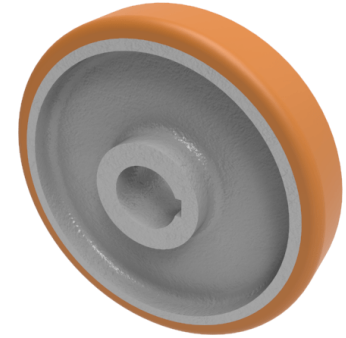


## Vulkollan Polyurethane Drive Wheel 300mm 1200kg Load

**Product code: VPT3005040KM**



**POA** High grade Vulkollan polyurethane tyre on cast iron centred wheel with a keyway. Diameter 300mm, tread width 50mm, Keyway bore size 40mm, hub length 60mm. Load capacity 1200kg PLEASE NOTE BORE SIZE TOLERANCES IS BASED ON H7 ( - 0.0 +0.18 ) DIN6885 ISO 286-2 STANDARD **\*\*MANUFACTURED TO ORDER\*\***

|                         |  |
|-------------------------|--|
| Load Capacity (kg)      | 1200   |
| Wheel Material          | Polyurethane on Cast Iron                        |
| Diameter (mm)           | 300  |
| Hub Width (mm)          | 60   |
| Bore Size (mm)          | 40   |
| Tread (mm)              | 50   |
| Colour / Shore Hardness | Vulkollan Polyurethane on Cast Iron / 92 Shore A |
| Temperature Resistance  | -40 °C to +80 °C                                 |
| Bearing Type            | Keywayed   |