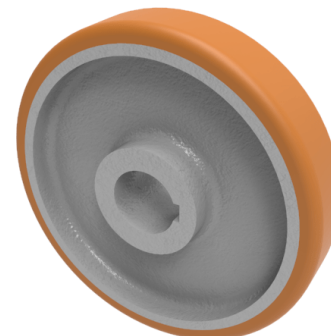


Vulkollan Polyurethane Drive Wheel 150mm 660kg Load

Product code: BZXH150WVPT50KW



POA High grade Vulkollan polyurethane tyre on cast iron centred wheel with a keyway. Diameter 150mm, tread width 50mm, Keyway bore size 50mm, hub length 50mm. Load capacity 830kg static and 660kg at 6kph. PLEASE NOTE BORE SIZE TOLERANCES IS BASED ON H7 (- 0.0 +0.18 50DIN6885 ISO 286-2 STANDARD ****MANUFACTURED TO ORDER****

| | |
|-------------------------|--|
| Load Capacity (kg) | 660 |
| Wheel Material | Polyurethane on Cast Iron |
| Diameter (mm) | 150 |
| Hub Width (mm) | 50 |
| Bore Size (mm) | 50 |
| Tread (mm) | 50 |
| Colour / Shore Hardness | Vulkollan Polyurethane on Cast Iron / 92 Shore A |
| Temperature Resistance | -40 °C to +80 °C |
| Bearing Type | Keywayed |

BIL GROUP LTD

Porte Marsh Road, Calne, Wiltshire, SN11 9BW

Registered in England No: 2603821

VAT Reg: GB572705729

