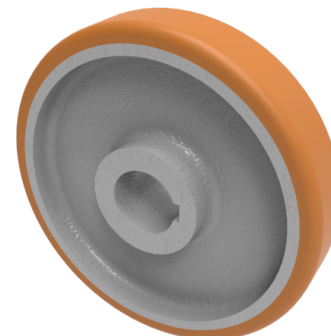


## Vulkollan Polyurethane Drive Wheel 150mm 530kg Load

**Product code: BZH150WVPT50KW**



**POA** High grade Vulkollan polyurethane tyre on cast iron centred wheel with a keyway. Diameter 150mm, tread width 40mm, Keyway bore size 50mm, hub length 40mm. Load capacity 660kg static and 530kg at 6kph. PLEASE NOTE BORE SIZE TOLERANCES IS BASED ON H7 ( - 0.0 +0.18 ) DIN6885 ISO 286-2 STANDARD **\*\*MANUFACTURED TO ORDER\*\***

Load Capacity (kg)	530
Wheel Material	Polyurethane on Cast Iron
Diameter (mm)	150
Hub Width (mm)	40
Bore Size (mm)	50
Tread (mm)	40
Colour / Shore Hardness	Vulkollan Polyurethane on Cast Iron / 92 Shore A
Temperature Resistance	-40 °C to +80 °C
Bearing Type	Keywayed

## BIL GROUP LTD

Porte Marsh Road, Calne, Wiltshire, SN11 9BW

Registered in England No: 2603821

VAT Reg: GB572705729

