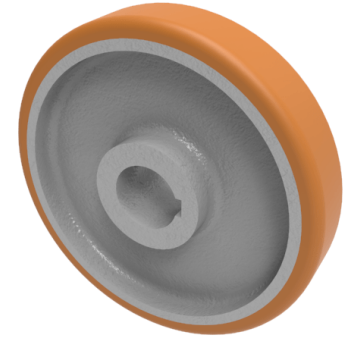


Vulkollan Polyurethane Drive Wheel 100mm 360kg Load

Product code: VPT1004030KM



POA High grade Vulkollan polyurethane tyre on cast iron centred wheel with a keyway. Diameter 100mm, tread width 40mm, Keyway bore size 30mm, hub length 45mm. Load capacity 360kg PLEASE NOTE BORE SIZE TOLERANCES IS BASED ON H7 (- 0.0 +0.18) DIN6885 ISO 286-2 STANDARD ****MANUFACTURED TO ORDER****

Load Capacity (kg)	360
Wheel Material	Polyurethane on Cast Iron
Diameter (mm)	100
Hub Width (mm)	45
Bore Size (mm)	30
Tread (mm)	40
Colour / Shore Hardness	Vulkollan Polyurethane on Cast Iron / 92 Shore A
Temperature Resistance	-40 °C to +80 °C
Bearing Type	Keywayed

BIL GROUP LTD

Porte Marsh Road, Calne, Wiltshire, SN11 9BW

Registered in England No: 2603821

VAT Reg: GB572705729

