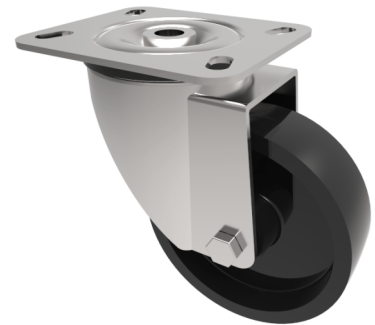


Thermoplastic Plate Swivel Castor 100mm 200kg Load

Product code: BZXM100TP3TF

Pressed steel swivel castor with a top plate fixing fitted with a black thermoplastic wheel with PTFE bushes. Wheel diameter 100mm, tread width 30mm, overall height 128mm, top plate 105mm x 80mm, hole centres 80mm x 60mm or 75mm x 45mm. Load capacity 200kg at 280c consent and 300c peak temperature. REACH compliant, RoHs Compliant, USDA approved FDA approved.



Diameter (mm)	100
Fixing Option	Plate
Castor Type	Swivel
Plate Size (mm)	100 x 85
Hole Centres (mm)	80/75 x 60/45
To Suit Fixing Bolt (mm)	8
Height (mm)	128
Bearing Type	PTFE Bush
Swivel Radius (mm)	92
Wheel Material	Ditherm
Colour / Shore Hardness	Black High Temperature Ditherm Thermoplastic
Temperature Resistance	-40 °C to +280 °C
Load Capacity (kg)	200
Tread (mm)	30
Top Plate Thickness (mm)	2.5
Fork Thickness (mm)	2.5

BIL GROUP LTD

Porte Marsh Road, Calne, Wiltshire, SN11 9BW

Registered in England No: 2603821

VAT Reg: GB572705729

