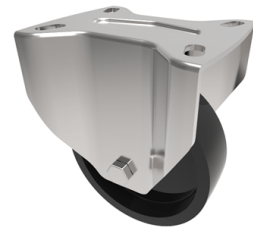


Thermoplastic Plate Fixed Castor Locking Castor 100mm 180kg Load

Product code: SSMMF100TP3



Grade 304 Pressed stainless steel fixed castor with top plate fixing fitted with a Black thermoplastic wheel with a plain bore. Wheel diameter 100mm, tread width 30mm, overall height 128 mm, plate size 105mm x 85mm, hole centres 80mm x 60mm. Load capacity 180kg at 280c consent and 300c peak temperature. REACH compliant, RoHs Compliant, USDA approved FDA approved.

Diameter (mm)	100
Fixing Option	Plate
Castor Type	Fixed
Plate Size (mm)	100 x 85
Hole Centres (mm)	80/75 x 60/45
To Suit Fixing Bolt (mm)	8
Height (mm)	128
Bearing Type	Plain
Wheel Material	Ditherm
Colour / Shore Hardness	Black High Temperature Ditherm Thermoplastic
Temperature Resistance	-40 °C to +280 °C
Load Capacity (kg)	180
Tread (mm)	30
Top Plate Thickness (mm)	2
Fork Thickness (mm)	2

BIL GROUP LTD

Porte Marsh Road, Calne, Wiltshire, SN11 9BW

Registered in England No: 2603821

VAT Reg: GB572705729

