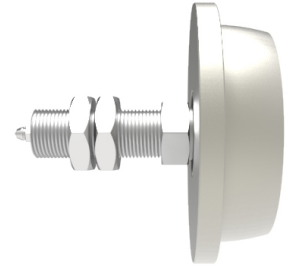


Steel Radiused Flanged 133mm 'I' Beam Wheel with M30 Axle 1000kg

Product code: SSAR13335BJ



Flanged steel radiused wheel with ball bearings and steel axle. Wheel diameter 133mm, outer flange 160mm, tread width 35mm, hub length 47mm. Axle M30, Load capacity 1000kg. Suitable for use with (RSC) Rolled steel channels.

Wheel Material	Steel
Diameter (mm)	133
Flanged Diameter (mm)	160
Tread (mm)	35
Total Width (mm)	47
Bore Size (mm)	25
Bearing Type	Ball
Nut Width	18
Thread Length (mm)	63
Axle Size	M30
Load Capacity (kg)	1000
Colour / Shore Hardness	Steel
Temperature Resistance	-30 °C to +120 °C

BIL GROUP LTD

Porte Marsh Road, Calne, Wiltshire, SN11 9BW

Registered in England No: 2603821

VAT Reg: GB572705729

