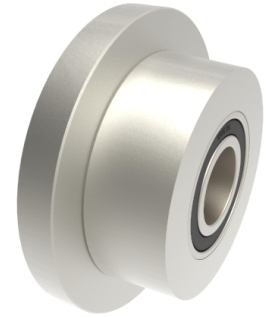


## Steel Flanged 75mm Ball Bearing Rail Wheel 975kg

**Product code: 75WMSSFBJM25**



**POA** Single Flanged steel wheel with ball bearings. Wheel diameter 75mm, outer flange diameter 100mm, tread width 25mm, total width 37mm, hub width 37mm bore 25mm Load capacity 975kg. **\*\*MANUFACTURED TO ORDER\*\***

Wheel Material	Steel
Colour / Shore Hardness	Steel
Diameter (mm)	75
Flanged Diameter (mm)	100
Flange Width (mm)	25
Load Capacity (kg)	975
Bearing Type	Ball
Bore Size (mm)	25
Total Tread (mm)	37
Tread (mm)	25
Hub Width (mm)	37
Temperature Resistance	-30 °C to +120 °C

### BIL GROUP LTD

Porte Marsh Road, Calne, Wiltshire, SN11 9BW

Registered in England No: 2603821

VAT Reg: GB572705729

